

EIF4B Antibody (Center)

Purified Rabbit Polyclonal Antibody (Pab)

Catalog # AP1950c

Product Information

Application	WB, IHC-P, E
Primary Accession	P23588
Other Accession	Q8BGD9 , Q8WYK5
Reactivity	Human
Predicted	Mouse
Host	Rabbit
Clonality	Polyclonal
Isotype	Rabbit IgG
Clone Names	RB11720
Calculated MW	69151
Antigen Region	353-382

Additional Information

Gene ID	1975
Other Names	Eukaryotic translation initiation factor 4B, eIF-4B, EIF4B
Target/Specificity	This EIF4B antibody is generated from rabbits immunized with a KLH conjugated synthetic peptide between 353-382 amino acids from the Central region of human EIF4B.
Dilution	WB~~1:1000 IHC-P~~1:100~500 E~~Use at an assay dependent concentration.
Format	Purified polyclonal antibody supplied in PBS with 0.09% (W/V) sodium azide. This antibody is prepared by Saturated Ammonium Sulfate (SAS) precipitation followed by dialysis against PBS.
Storage	Maintain refrigerated at 2-8°C for up to 2 weeks. For long term storage store at -20°C in small aliquots to prevent freeze-thaw cycles.
Precautions	EIF4B Antibody (Center) is for research use only and not for use in diagnostic or therapeutic procedures.

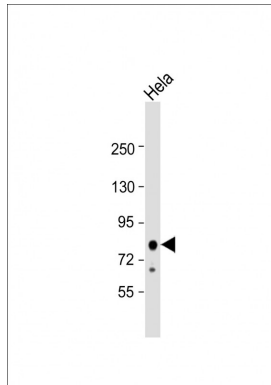
Protein Information

Name	EIF4B
Function	Required for the binding of mRNA to ribosomes. Functions in close association with EIF4-F and EIF4-A. Binds near the 5'-terminal cap of mRNA in presence of EIF-4F and ATP. Promotes the ATPase activity and the

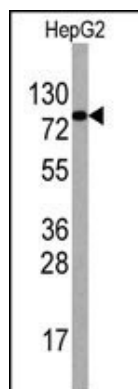
Background

EIF4B is required for the binding of mRNA to ribosomes. It functions in close association with EIF4-F and EIF4-A by binding near the 5'- terminal cap of mRNA in presence of EIF-4F and ATP. This gene also promotes the ATPase activity and the ATP-dependent RNA unwinding activity of both EIF4-A and EIF4-F

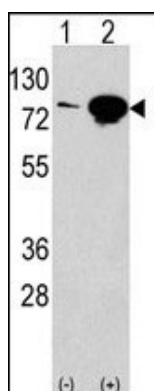
Images



Anti-EIF4B Antibody (Center) at 1:1000 dilution + HeLa whole cell lysates/ proteins at 20 μ g per lane. Secondary Goat Anti-Rabbit IgG, (H+L), Peroxidase conjugated at 1/10000 dilution. Predicted band size : 69 kDa Blocking/Dilution buffer: 5% NFDM/TBST.

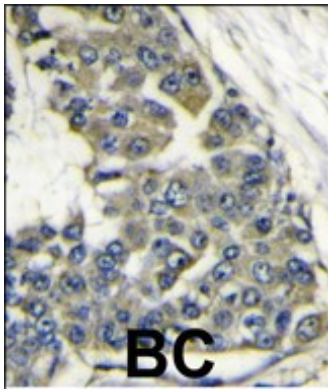


Western blot analysis of anti-EIF4B Antibody (Center) Pab (Cat.#AP1950c) in HepG2 cell line lysates (35ug/lane). EIF4B (arrow) was detected using the purified Pab.



Western blot analysis of anti-EIF4B Antibody (Center) Pab (Cat.#AP1950c) in 293 cell line lysates transiently transfected with the EIF4B gene (2ug/lane). EIF4B (arrow) was detected using the purified Pab.

Formalin-fixed and paraffin-embedded human breast carcinoma reacted with EIF4B antibody (Center)(Cat.#AP1950c), which was peroxidase-conjugated to the secondary antibody, followed by DAB staining. This data demonstrates the use of this antibody for immunohistochemistry; clinical relevance has not been evaluated.



Please note: All products are 'FOR RESEARCH USE ONLY. NOT FOR USE IN DIAGNOSTIC OR THERAPEUTIC PROCEDURES'.