

GTF2IRD2B Antibody(C-term)

Affinity Purified Rabbit Polyclonal Antibody (Pab)

Catalog # AP19546b

Product Information

Application	WB, E
Primary Accession	Q6EKJ0
Other Accession	Q86UP8 , NP_001003795.1
Reactivity	Human
Host	Rabbit
Clonality	Polyclonal
Isotype	Rabbit IgG
Clone Names	RB40709
Calculated MW	107233
Antigen Region	467-494

Additional Information

Gene ID	389524
Other Names	General transcription factor II-I repeat domain-containing protein 2B, GTF2I repeat domain-containing protein 2B, Transcription factor GTF2IRD2-beta, GTF2IRD2B
Target/Specificity	This GTF2IRD2B antibody is generated from rabbits immunized with a KLH conjugated synthetic peptide between 467-494 amino acids from the C-terminal region of human GTF2IRD2B.
Dilution	WB~~1:1000 E~~Use at an assay dependent concentration.
Format	Purified polyclonal antibody supplied in PBS with 0.09% (W/V) sodium azide. This antibody is purified through a protein A column, followed by peptide affinity purification.
Storage	Maintain refrigerated at 2-8°C for up to 2 weeks. For long term storage store at -20°C in small aliquots to prevent freeze-thaw cycles.
Precautions	GTF2IRD2B Antibody(C-term) is for research use only and not for use in diagnostic or therapeutic procedures.

Protein Information

Name	GTF2IRD2B
Cellular Location	Nucleus.

Tissue Location

Ubiquitous.

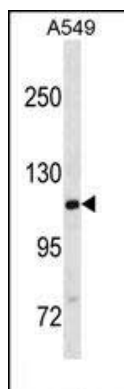
Background

This gene encodes a glycosylated phosphoprotein with a leucine zipper motif, two helix-loop-helix motifs (1 repeats) that are similar to domains found in the TFII-I family of transcription factors, one CHARLIE8 transposable element-like sequence, and a BED zinc finger. This gene lies within a region that is deleted in Williams-Beuren syndrome. Alternatively spliced variants which encode different protein isoforms have been described; however, not all variants have been fully characterized.

References

Hinsley, T.A., et al. Protein Sci. 13(10):2588-2599(2004)
Tipney, H.J., et al. Eur. J. Hum. Genet. 12(7):551-560(2004)

Images



GTF2IRD2B Antibody (C-term) (Cat. #AP19546b) western blot analysis in A549 cell line lysates (35ug/lane). This demonstrates the GTF2IRD2B antibody detected the GTF2IRD2B protein (arrow).

Please note: All products are 'FOR RESEARCH USE ONLY. NOT FOR USE IN DIAGNOSTIC OR THERAPEUTIC PROCEDURES'.