

PRR14 Antibody(C-term)

Affinity Purified Rabbit Polyclonal Antibody (Pab)

Catalog # AP19549b

Product Information

| | |
|-------------------|--|
| Application | WB, E |
| Primary Accession | Q9BWN1 |
| Other Accession | Q7TPN9 , NP_076936.1 |
| Reactivity | Human |
| Predicted | Mouse |
| Host | Rabbit |
| Clonality | Polyclonal |
| Isotype | Rabbit IgG |
| Clone Names | RB40778 |
| Calculated MW | 64328 |
| Antigen Region | 422-450 |

Additional Information

| | |
|--------------------|--|
| Gene ID | 78994 |
| Other Names | Proline-rich protein 14, PRR14 |
| Target/Specificity | This PRR14 antibody is generated from rabbits immunized with a KLH conjugated synthetic peptide between 422-450 amino acids from the C-terminal region of human PRR14. |
| Dilution | WB~~1:1000 E~~Use at an assay dependent concentration. |
| Format | Purified polyclonal antibody supplied in PBS with 0.09% (W/V) sodium azide. This antibody is purified through a protein A column, followed by peptide affinity purification. |
| Storage | Maintain refrigerated at 2-8°C for up to 2 weeks. For long term storage store at -20°C in small aliquots to prevent freeze-thaw cycles. |
| Precautions | PRR14 Antibody(C-term) is for research use only and not for use in diagnostic or therapeutic procedures. |

Protein Information

| | |
|----------|---|
| Name | PRR14 |
| Function | Functions in tethering peripheral heterochromatin to the nuclear lamina during interphase, possibly through the interaction with heterochromatin protein CBX5/HP1 alpha (PubMed: 24209742). Might play a role in reattaching |

heterochromatin to the nuclear lamina at mitotic exit (PubMed:[24209742](#)). Promotes myoblast differentiation during skeletal myogenesis, possibly by stimulating transcription factor MyoD activity via binding to CBX5/HP1 alpha (PubMed:[25906157](#)). Involved in the positive regulation of the PI3K-Akt-mTOR signaling pathway and in promoting cell proliferation, possibly via binding to GRB2 (PubMed:[27041574](#)).

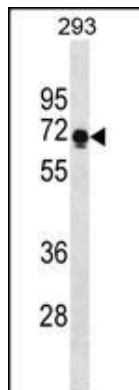
Cellular Location

Chromosome. Nucleus. Nucleus lamina. Nucleus, nucleoplasm. Note=During interphase, associated with peripheral heterochromatin at the nuclear lamina. Released from the nuclear lamina in mitotic prophase and remains highly dispersed in metaphase. Associates with chromatin at the onset of anaphase and relocates to the nuclear lamina in telophase

References

Han, J.W., et al. Nat. Genet. 41(11):1234-1237(2009)

Images



PRR14 Antibody (C-term) (Cat. #AP19549b) western blot analysis in 293 cell line lysates (35ug/lane). This demonstrates the PRR14 antibody detected the PRR14 protein (arrow).

Please note: All products are 'FOR RESEARCH USE ONLY. NOT FOR USE IN DIAGNOSTIC OR THERAPEUTIC PROCEDURES'.