

MS4A13 Antibody(N-term)

Affinity Purified Rabbit Polyclonal Antibody (Pab)

Catalog # AP19573a

Product Information

Application	WB, E
Primary Accession	Q5J8X5
Other Accession	NP_001012417.2
Reactivity	Human, Mouse
Host	Rabbit
Clonality	Polyclonal
Isotype	Rabbit IgG
Clone Names	RB29884
Calculated MW	17307
Antigen Region	7-36

Additional Information

Gene ID	503497
Other Names	Membrane-spanning 4-domains subfamily A member 13, Testis-expressed transmembrane protein 4, MS4A13
Target/Specificity	This MS4A13 antibody is generated from rabbits immunized with a KLH conjugated synthetic peptide between 7-36 amino acids from the N-terminal region of human MS4A13.
Dilution	WB~~1:1000 E~~Use at an assay dependent concentration.
Format	Purified polyclonal antibody supplied in PBS with 0.09% (W/V) sodium azide. This antibody is purified through a protein A column, followed by peptide affinity purification.
Storage	Maintain refrigerated at 2-8°C for up to 2 weeks. For long term storage store at -20°C in small aliquots to prevent freeze-thaw cycles.
Precautions	MS4A13 Antibody(N-term) is for research use only and not for use in diagnostic or therapeutic procedures.

Protein Information

Name	MS4A13
Function	May be involved in signal transduction as a component of a multimeric receptor complex.

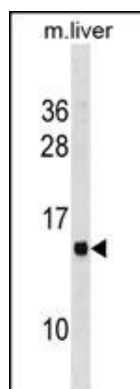
Background

MS4A13 may be involved in signal transduction as a component of a multimeric receptor complex (By similarity).

References

Strausberg, R.L., et al. Proc. Natl. Acad. Sci. U.S.A. 99(26):16899-16903(2002)

Images



MS4A13 Antibody (N-term) (Cat. #AP19573a) western blot analysis in mouse liver tissue lysates (35ug/lane). This demonstrates the MS4A13 antibody detected the MS4A13 protein (arrow).

Please note: All products are 'FOR RESEARCH USE ONLY. NOT FOR USE IN DIAGNOSTIC OR THERAPEUTIC PROCEDURES'.