

PHOSPHO2 Antibody(N-term)

Affinity Purified Rabbit Polyclonal Antibody (Pab)

Catalog # AP19574a

Product Information

| | |
|--------------------------|--------------------------------|
| Application | WB, E |
| Primary Accession | Q8TCD6 |
| Other Accession | NP_001008489.1 |
| Reactivity | Human, Mouse |
| Host | Rabbit |
| Clonality | Polyclonal |
| Isotype | Rabbit IgG |
| Clone Names | RB30604 |
| Calculated MW | 27769 |
| Antigen Region | 12-40 |

Additional Information

| | |
|---------------------------|--|
| Gene ID | 493911 |
| Other Names | Pyridoxal phosphate phosphatase PHOSPHO2, PHOSPHO2 |
| Target/Specificity | This PHOSPHO2 antibody is generated from rabbits immunized with a KLH conjugated synthetic peptide between 12-40 amino acids from the N-terminal region of human PHOSPHO2. |
| Dilution | WB~~1:1000 E~~Use at an assay dependent concentration. |
| Format | Purified polyclonal antibody supplied in PBS with 0.09% (W/V) sodium azide. This antibody is purified through a protein A column, followed by peptide affinity purification. |
| Storage | Maintain refrigerated at 2-8°C for up to 2 weeks. For long term storage store at -20°C in small aliquots to prevent freeze-thaw cycles. |
| Precautions | PHOSPHO2 Antibody(N-term) is for research use only and not for use in diagnostic or therapeutic procedures. |

Protein Information

| | |
|-----------------|---|
| Name | PHOSPHO2 |
| Function | Phosphatase that has high activity toward pyridoxal 5'- phosphate (PLP). Also active at much lower level toward pyrophosphate, phosphoethanolamine (PEA), phosphocholine (PCho), phospho-l-tyrosine, fructose-6-phosphate, p-nitrophenyl phosphate, and h-glycerophosphate. |

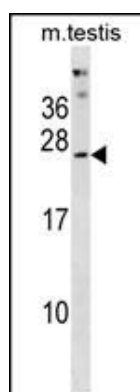
Background

Phosphatase that has high activity toward pyridoxal 5'-phosphate (PLP). Also active at much lower level toward pyrophosphate, phosphoethanolamine (PEA), phosphocholine (PCho), phospho-l-tyrosine, fructose-6-phosphate, p-nitrophenyl phosphate, and h-glycerophosphate.

References

Oh, J.H., et al. Mamm. Genome 16(12):942-954(2005)
Roberts, S.J., et al. Biochim. Biophys. Acta 1752(1):73-82(2005)

Images



PHOSPHO2 Antibody (N-term) (Cat. #AP19574a) western blot analysis in mouse testis tissue lysates (35ug/lane). This demonstrates the PHOSPHO2 antibody detected the PHOSPHO2 protein (arrow).

Please note: All products are 'FOR RESEARCH USE ONLY. NOT FOR USE IN DIAGNOSTIC OR THERAPEUTIC PROCEDURES'.