

# Mouse Hras1 Antibody(C-term)

Affinity Purified Rabbit Polyclonal Antibody (Pab)

Catalog # AP19575b

## Product Information

---

<b>Application</b>	WB, E
<b>Primary Accession</b>	<a href="#">Q61411</a>
<b>Other Accession</b>	<a href="#">P20171</a> , <a href="#">P01112</a> , <a href="#">P08642</a>
<b>Reactivity</b>	Mouse
<b>Predicted</b>	Chicken, Human, Rat
<b>Host</b>	Rabbit
<b>Clonality</b>	Polyclonal
<b>Isotype</b>	Rabbit IgG
<b>Clone Names</b>	RB30628
<b>Calculated MW</b>	21298
<b>Antigen Region</b>	151-179

## Additional Information

---

<b>Gene ID</b>	15461
<b>Other Names</b>	GTPase HRas, H-Ras-1, Transforming protein p21, c-H-ras, p21ras, GTPase HRas, N-terminally processed, Hras, Hras1
<b>Target/Specificity</b>	This Mouse Hras1 antibody is generated from rabbits immunized with a KLH conjugated synthetic peptide between 151-179 amino acids from the C-terminal region of mouse Hras1.
<b>Dilution</b>	WB~~1:1000 E~~Use at an assay dependent concentration.
<b>Format</b>	Purified polyclonal antibody supplied in PBS with 0.09% (W/V) sodium azide. This antibody is purified through a protein A column, followed by peptide affinity purification.
<b>Storage</b>	Maintain refrigerated at 2-8°C for up to 2 weeks. For long term storage store at -20°C in small aliquots to prevent freeze-thaw cycles.
<b>Precautions</b>	Mouse Hras1 Antibody(C-term) is for research use only and not for use in diagnostic or therapeutic procedures.

## Protein Information

---

<b>Name</b>	Hras
<b>Synonyms</b>	Hras1

**Function**

Ras proteins bind GDP/GTP and possess intrinsic GTPase activity.

**Cellular Location**

Cell membrane {ECO:0000250 | UniProtKB:P20171}. Cell membrane; Lipid-anchor; Cytoplasmic side. Golgi apparatus. Golgi apparatus membrane; Lipid-anchor. Note=Shuttles between the plasma membrane and the Golgi apparatus. The active GTP- bound form is localized most strongly to membranes than the inactive GDP-bound form (By similarity).

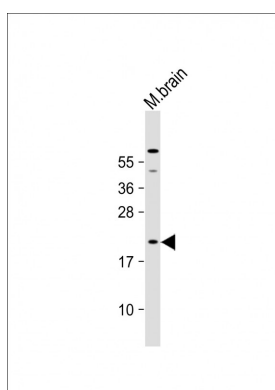
## Background

---

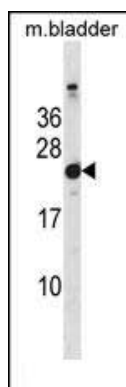
Ras proteins bind GDP/GTP and possess intrinsic GTPase activity.

## Images

---



Anti-Mouse Hras1 Antibody (C-term) at 1:1000 dilution + mouse brain lysate Lysates/proteins at 20 µg per lane. Secondary Goat Anti-Rabbit IgG, (H+L), Peroxidase conjugated at 1/10000 dilution. Predicted band size : 21 kDa Blocking/Dilution buffer: 5% NFDM/TBST.



Mouse Hras1 Antibody (C-term) (Cat. #AP19575b) western blot analysis in mouse bladder tissue lysates (35ug/lane). This demonstrates the Mouse Hras1 antibody detected the Mouse Hras1 protein (arrow).

Please note: All products are 'FOR RESEARCH USE ONLY. NOT FOR USE IN DIAGNOSTIC OR THERAPEUTIC PROCEDURES'.