

# DPCR1 Antibody(Center)

Affinity Purified Rabbit Polyclonal Antibody (Pab)

Catalog # AP19577c

## Product Information

---

Application	WB, E
Primary Accession	<a href="#">Q3MIW9</a>
Other Accession	<a href="#">NP_543146.2</a>
Reactivity	Human
Host	Rabbit
Clonality	Polyclonal
Isotype	Rabbit IgG
Clone Names	RB30655
Calculated MW	56347
Antigen Region	165-191

## Additional Information

---

Gene ID	135656
Other Names	Diffuse panbronchiolitis critical region protein 1, DPCR1, C6orf37, PBLT
Target/Specificity	This DPCR1 antibody is generated from rabbits immunized with a KLH conjugated synthetic peptide between 165-191 amino acids from the Central region of human DPCR1.
Dilution	WB~~1:1000 E~~Use at an assay dependent concentration.
Format	Purified polyclonal antibody supplied in PBS with 0.09% (W/V) sodium azide. This antibody is purified through a protein A column, followed by peptide affinity purification.
Storage	Maintain refrigerated at 2-8°C for up to 2 weeks. For long term storage store at -20°C in small aliquots to prevent freeze-thaw cycles.
Precautions	DPCR1 Antibody(Center) is for research use only and not for use in diagnostic or therapeutic procedures.

## Protein Information

---

Name	MUCL3 ( <a href="#">HGNC:21666</a> )
Function	May modulate NF-kappaB signaling and play a role in cell growth.
Cellular Location	Cell membrane; Single-pass type I membrane protein. Cytoplasm

## Tissue Location

Detected in lung, esophagus, stomach, rectum, skin, cervix, testis, kidney, uterus and small intestine (PubMed:12185533) Expressed in pancreas (at protein level) (PubMed:29242154)

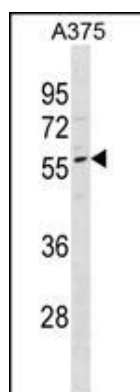
## References

---

Fellay, J., et al. PLoS Genet. 5 (12), E1000791 (2009) :  
Barcellos, L.F., et al. PLoS Genet. 5 (10), E1000696 (2009) :  
Lamesch, P., et al. Genomics 89(3):307-315(2007)  
Shiina, T., et al. Genetics 173(3):1555-1570(2006)  
Matsuzaka, Y., et al. Immunogenetics 54(5):301-309(2002)

## Images

---



DPCR1 Antibody (Center) (Cat. #AP19577c) western blot analysis in A375 cell line lysates (35ug/lane). This demonstrates the DPCR1 antibody detected the DPCR1 protein (arrow).

Please note: All products are 'FOR RESEARCH USE ONLY. NOT FOR USE IN DIAGNOSTIC OR THERAPEUTIC PROCEDURES'.