

# Rat Arg1 Antibody(C-term)

Affinity Purified Rabbit Polyclonal Antibody (Pab)

Catalog # AP19587b

## Product Information

---

<b>Application</b>	WB, E
<b>Primary Accession</b>	<a href="#">P07824</a>
<b>Other Accession</b>	<a href="#">NP_058830.2</a>
<b>Reactivity</b>	Rat
<b>Host</b>	Rabbit
<b>Clonality</b>	Polyclonal
<b>Isotype</b>	Rabbit IgG
<b>Clone Names</b>	RB38664
<b>Calculated MW</b>	34973
<b>Antigen Region</b>	292-318

## Additional Information

---

<b>Gene ID</b>	29221
<b>Other Names</b>	Arginase-1, Liver-type arginase, Type I arginase, Arg1
<b>Target/Specificity</b>	This Rat Arg1 antibody is generated from rabbits immunized with a KLH conjugated synthetic peptide between 292-318 amino acids from the C-terminal region of rat Arg1.
<b>Dilution</b>	WB~~1:1000 E~~Use at an assay dependent concentration.
<b>Format</b>	Purified polyclonal antibody supplied in PBS with 0.09% (W/V) sodium azide. This antibody is purified through a protein A column, followed by peptide affinity purification.
<b>Storage</b>	Maintain refrigerated at 2-8°C for up to 2 weeks. For long term storage store at -20°C in small aliquots to prevent freeze-thaw cycles.
<b>Precautions</b>	Rat Arg1 Antibody(C-term) is for research use only and not for use in diagnostic or therapeutic procedures.

## Protein Information

---

<b>Name</b>	Arg1
<b>Function</b>	Key element of the urea cycle converting L-arginine to urea and L-ornithine, which is further metabolized into metabolites proline and polyamides that drive collagen synthesis and bioenergetic pathways critical for cell proliferation, respectively; the urea cycle takes place primarily in the liver and,

to a lesser extent, in the kidneys.

**Cellular Location**

Cytoplasm {ECO:0000250|UniProtKB:P05089}. Cytoplasmic granule {ECO:0000250|UniProtKB:P05089}

**Tissue Location**

Detected in liver (at protein level).

## Background

---

catalyzes the hydrolysis of arginine to ornithine and urea in arginine metabolism; regulates nitric oxide production [RGD].

## References

---

Warnken, M., et al. Naunyn Schmiedebergs Arch. Pharmacol. 381(4):297-304(2010)

Zhu, W., et al. Am. J. Physiol., Cell Physiol. 298 (4), C952-C960 (2010) :

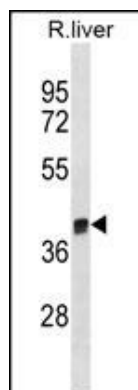
Bagnost, T., et al. Hypertens. Res. 32(12):1130-1135(2009)

Kim, J.H., et al. J. Appl. Physiol. 107(4):1249-1257(2009)

Deng, K., et al. J. Neurosci. 29(30):9545-9552(2009)

## Images

---



Rat Arg1 Antibody (C-term) (Cat. #AP19587b) western blot analysis in rat liver tissue lysates (35ug/lane). This demonstrates the Rat Arg1 antibody detected the Rat Arg1 protein (arrow).

Please note: All products are 'FOR RESEARCH USE ONLY. NOT FOR USE IN DIAGNOSTIC OR THERAPEUTIC PROCEDURES'.