

# ESR2 Antibody(Center)

Affinity Purified Rabbit Polyclonal Antibody (Pab)

Catalog # AP19612C

## Product Information

---

<b>Application</b>	WB, E
<b>Primary Accession</b>	<a href="#">Q92731</a>
<b>Other Accession</b>	<a href="#">NP_001035365.1</a>
<b>Reactivity</b>	Human, Mouse
<b>Host</b>	Rabbit
<b>Clonality</b>	Polyclonal
<b>Isotype</b>	Rabbit IgG
<b>Clone Names</b>	RB41114
<b>Calculated MW</b>	59216
<b>Antigen Region</b>	211-240

## Additional Information

---

<b>Gene ID</b>	2100
<b>Other Names</b>	Estrogen receptor beta, ER-beta, Nuclear receptor subfamily 3 group A member 2, ESR2, ESTRB, NR3A2
<b>Target/Specificity</b>	This ESR2 antibody is generated from rabbits immunized with a KLH conjugated synthetic peptide between 211-240 amino acids from the Central region of human ESR2.
<b>Dilution</b>	WB~~1:2000 E~~Use at an assay dependent concentration.
<b>Format</b>	Purified polyclonal antibody supplied in PBS with 0.09% (W/V) sodium azide. This antibody is purified through a protein A column, followed by peptide affinity purification.
<b>Storage</b>	Maintain refrigerated at 2-8°C for up to 2 weeks. For long term storage store at -20°C in small aliquots to prevent freeze-thaw cycles.
<b>Precautions</b>	ESR2 Antibody(Center) is for research use only and not for use in diagnostic or therapeutic procedures.

## Protein Information

---

<b>Name</b>	ESR2
<b>Synonyms</b>	ESTRB, NR3A2
<b>Function</b>	Nuclear hormone receptor. Binds estrogens with an affinity similar to that

of ESR1/ER-alpha, and activates expression of reporter genes containing estrogen response elements (ERE) in an estrogen- dependent manner (PubMed:[20074560](#)).

#### Cellular Location

Nucleus {ECO:0000255 | PROSITE-ProRule:PRU00407, ECO:0000269 | PubMed:19126643, ECO:0000269 | PubMed:20074560}

#### Tissue Location

[Isoform 1]: Expressed in testis and ovary, and at a lower level in heart, brain, placenta, liver, skeletal muscle, spleen, thymus, prostate, colon, bone marrow, mammary gland and uterus Also found in uterine bone, breast, and ovarian tumor cell lines, but not in colon and liver tumors. [Isoform 4]: Expressed in the testis. [Isoform 6]: Expressed in testis, placenta, skeletal muscle, spleen and leukocytes, and at a lower level in heart, lung, liver, kidney, pancreas, thymus, prostate, colon, small intestine, bone marrow, mammary gland and uterus. Not expressed in brain.

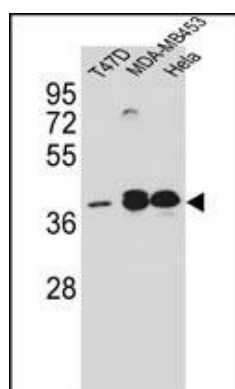
## Background

This gene encodes a member of the family of estrogen receptors and superfamily of nuclear receptor transcription factors. The gene product contains an N-terminal DNA binding domain and C-terminal ligand binding domain and is localized to the nucleus, cytoplasm, and mitochondria. Upon binding to 17beta-estradiol or related ligands, the encoded protein forms homo- or hetero-dimers that interact with specific DNA sequences to activate transcription. Some isoforms dominantly inhibit the activity of other estrogen receptor family members. Several alternatively spliced transcript variants of this gene have been described, but the full-length nature of some of these variants has not been fully characterized.

## References

Fang, Y.J., et al. Tumour Biol. 31(6):651-658(2010)  
Hayes, D.F., et al. Clin. Pharmacol. Ther. 88(5):626-629(2010)  
Romero, R., et al. Am. J. Obstet. Gynecol. 203 (4), 361 (2010) :  
Wurster, M., et al. Oncol. Rep. 24(3):653-659(2010)  
Paulus, J.K., et al. Lung Cancer (2010) In press :

## Images



ESR2 Antibody (Center) (Cat. #AP19612c) western blot analysis in T47D, MDA-MB453, HeLa cell line lysates (35ug/lane). This demonstrates the ESR2 antibody detected the ESR2 protein (arrow).

Please note: All products are 'FOR RESEARCH USE ONLY. NOT FOR USE IN DIAGNOSTIC OR THERAPEUTIC PROCEDURES'.