

# MPPED1 Antibody(Center)

Affinity Purified Rabbit Polyclonal Antibody (Pab)

Catalog # AP19621b

## Product Information

---

|                          |   |
|--------------------------|---|
| <b>Application</b>       | WB, E   |
| <b>Primary Accession</b> | <a href="#">O15442</a>                                  |
| <b>Other Accession</b>   | <a href="#">Q91ZG2</a> , <a href="#">NP_001037835.1</a> |
| <b>Reactivity</b>        | Human   |
| <b>Predicted</b>         | Mouse   |
| <b>Host</b>              | Rabbit  |
| <b>Clonality</b>         | Polyclonal  |
| <b>Isotype</b>           | Rabbit IgG  |
| <b>Clone Names</b>       | RB41745   |
| <b>Calculated MW</b>     | 37207   |
| <b>Antigen Region</b>    | 140-168   |

## Additional Information

---

|                           |  |
|---------------------------|--|
| <b>Gene ID</b>            | 758  |
| <b>Other Names</b>        | Metallophosphoesterase domain-containing protein 1, 31--, Adult brain protein 239, 239AB, MPPED1, C22orf1, FAM1A   |
| <b>Target/Specificity</b> | This MPPED1 antibody is generated from rabbits immunized with a KLH conjugated synthetic peptide between 140-168 amino acids from the Central region of human MPPED1.        |
| <b>Dilution</b>           | WB~~1:1000 E~~Use at an assay dependent concentration.   |
| <b>Format</b>             | Purified polyclonal antibody supplied in PBS with 0.09% (W/V) sodium azide. This antibody is purified through a protein A column, followed by peptide affinity purification. |
| <b>Storage</b>            | Maintain refrigerated at 2-8°C for up to 2 weeks. For long term storage store at -20°C in small aliquots to prevent freeze-thaw cycles.                                      |
| <b>Precautions</b>        | MPPED1 Antibody(Center) is for research use only and not for use in diagnostic or therapeutic procedures.  |

## Protein Information

---

|                 |                |
|-----------------|----------------|
| <b>Name</b>     | MPPED1         |
| <b>Synonyms</b> | C22orf1, FAM1A |

|                        |  |
|------------------------|--|
| <b>Function</b>        | May have metallophosphoesterase activity (in vitro). |
| <b>Tissue Location</b> | Expressed predominantly in adult brain.              |

## Background

---

MPPED1 may have metallophosphoesterase activity (in vitro) (By similarity).

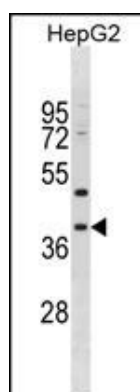
## References

---

Rose, J.E., et al. Mol. Med. 16 (7-8), 247-253 (2010) :  
 Collins, J.E., et al. Genome Biol. 5 (10), R84 (2004) :  
 Schwartz, F., et al. Gene 194(1):57-62(1997)  
 Schwartz, F., et al. Genomics 29(2):526-532(1995)

## Images

---



MPPED1 Antibody (Center) (Cat. #AP19621b) western blot analysis in HepG2 cell line lysates (35ug/lane). This demonstrates the MPPED1 antibody detected the MPPED1 protein (arrow).

Please note: All products are 'FOR RESEARCH USE ONLY. NOT FOR USE IN DIAGNOSTIC OR THERAPEUTIC PROCEDURES'.