

# AGAP11 Antibody(N-term)

Affinity Purified Rabbit Polyclonal Antibody (Pab)

Catalog # AP19627a

## Product Information

---

Application	WB, E
Primary Accession	<a href="#">Q8TF27</a>
Other Accession	<a href="#">NP_597704.1</a>
Reactivity	Human
Host	Rabbit
Clonality	Polyclonal
Isotype	Rabbit IgG
Clone Names	RB38672
Calculated MW	60549
Antigen Region	85-111

## Additional Information

---

Other Names	Arf-GAP with GTPase, ANK repeat and PH domain-containing protein 11, AGAP-11, Centaurin-gamma-like protein KIAA1975, AGAP11, KIAA1975
Target/Specificity	This AGAP11 antibody is generated from rabbits immunized with a KLH conjugated synthetic peptide between 85-111 amino acids from the N-terminal region of human AGAP11.
Dilution	WB~~1:1000 E~~Use at an assay dependent concentration.
Format	Purified polyclonal antibody supplied in PBS with 0.09% (W/V) sodium azide. This antibody is purified through a protein A column, followed by peptide affinity purification.
Storage	Maintain refrigerated at 2-8°C for up to 2 weeks. For long term storage store at -20°C in small aliquots to prevent freeze-thaw cycles.
Precautions	AGAP11 Antibody(N-term) is for research use only and not for use in diagnostic or therapeutic procedures.

## Protein Information

---

Name	AGAP11
Synonyms	KIAA1975
Function	Putative GTPase-activating protein.

## Background

---

AGAP11 is putative GTPase-activating protein (Potential).

## References

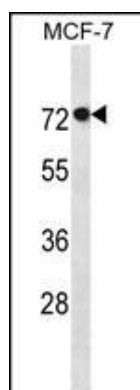
---

Ota, T., et al. Nat. Genet. 36(1):40-45(2004)

Strausberg, R.L., et al. Proc. Natl. Acad. Sci. U.S.A. 99(26):16899-16903(2002)

## Images

---



AGAP11 Antibody (N-term) (Cat. #AP19627a) western blot analysis in MCF-7 cell line lysates (35ug/lane). This demonstrates the AGAP11 antibody detected the AGAP11 protein (arrow).

Please note: All products are 'FOR RESEARCH USE ONLY. NOT FOR USE IN DIAGNOSTIC OR THERAPEUTIC PROCEDURES'.