

SRRM3 Antibody(Center)

Affinity Purified Rabbit Polyclonal Antibody (Pab)

Catalog # AP19628c

Product Information

| | |
|-------------------|------------------------|
| Application | WB, E |
| Primary Accession | A6NNA2 |
| Reactivity | Human, Mouse |
| Host | Rabbit |
| Clonality | Polyclonal |
| Isotype | Rabbit IgG |
| Clone Names | RB39884 |
| Calculated MW | 65249 |
| Antigen Region | 264-291 |

Additional Information

| | |
|--------------------|--|
| Other Names | Serine/arginine repetitive matrix protein 3, SRRM3 |
| Target/Specificity | This SRRM3 antibody is generated from rabbits immunized with a KLH conjugated synthetic peptide between 264-291 amino acids from the Central region of human SRRM3. |
| Dilution | WB~~1:1000 E~~Use at an assay dependent concentration. |
| Format | Purified polyclonal antibody supplied in PBS with 0.05% (V/V) Proclin 300. This antibody is prepared by Saturated Ammonium Sulfate (SAS) precipitation followed by dialysis against PBS. |
| Storage | Maintain refrigerated at 2-8°C for up to 2 weeks. For long term storage store at -20°C in small aliquots to prevent freeze-thaw cycles. |
| Precautions | SRRM3 Antibody(Center) is for research use only and not for use in diagnostic or therapeutic procedures. |

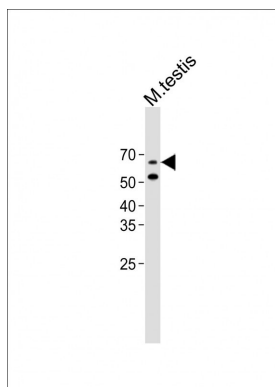
Protein Information

| | |
|-----------------|--|
| Name | SRRM3 |
| Function | May play a role in regulating breast cancer cell invasiveness (PubMed: 26053433). May be involved in RYBP-mediated breast cancer progression (PubMed: 27748911). |
| Tissue Location | Expressed in breast cancer cell lines. |

Background

The function of this protein remains unknown.

Images



All lanes: Anti-SRRM3 Antibody (Center) at 1:1000 dilution + Mouse testis lysate Lysates/proteins at 20 µg per lane. Secondary: Goat Anti-Rabbit IgG, (H+L), Peroxidase conjugated (ASP1615) at 1/15000 dilution. Observed band size: 65 KDa Blocking/Dilution buffer: 5% NFDM/TBST.

Please note: All products are 'FOR RESEARCH USE ONLY. NOT FOR USE IN DIAGNOSTIC OR THERAPEUTIC PROCEDURES'.