

# ZSCAN21 Antibody(Center)

Affinity Purified Rabbit Polyclonal Antibody (Pab)

Catalog # AP19635c

## Product Information

---

<b>Application</b>	WB, E
<b>Primary Accession</b>	<a href="#">Q9Y5A6</a>
<b>Other Accession</b>	<a href="#">NP_666019.1</a>
<b>Reactivity</b>	Human
<b>Host</b>	Rabbit
<b>Clonality</b>	Polyclonal
<b>Isotype</b>	Rabbit IgG
<b>Clone Names</b>	RB40454
<b>Calculated MW</b>	53658
<b>Antigen Region</b>	241-270

## Additional Information

---

<b>Gene ID</b>	7589
<b>Other Names</b>	Zinc finger and SCAN domain-containing protein 21, Renal carcinoma antigen NY-REN-21, Zinc finger protein 38 homolog, Zfp-38, ZSCAN21, ZFP38, ZNF38
<b>Target/Specificity</b>	This ZSCAN21 antibody is generated from rabbits immunized with a KLH conjugated synthetic peptide between 241-270 amino acids from the Central region of human ZSCAN21.
<b>Dilution</b>	WB~~1:1000 E~~Use at an assay dependent concentration.
<b>Format</b>	Purified polyclonal antibody supplied in PBS with 0.09% (W/V) sodium azide. This antibody is purified through a protein A column, followed by peptide affinity purification.
<b>Storage</b>	Maintain refrigerated at 2-8°C for up to 2 weeks. For long term storage store at -20°C in small aliquots to prevent freeze-thaw cycles.
<b>Precautions</b>	ZSCAN21 Antibody(Center) is for research use only and not for use in diagnostic or therapeutic procedures.

## Protein Information

---

<b>Name</b>	ZSCAN21
<b>Synonyms</b>	ZFP38, ZNF38
<b>Function</b>	Strong transcriptional activator (By similarity). Plays an important role in

spermatogenesis; essential for the progression of meiotic prophase I in spermatocytes (By similarity).

#### Cellular Location

Nucleus {ECO:0000255|PROSITE-ProRule:PRU00187}.

## Background

---

Strong transcriptional activator (By similarity).

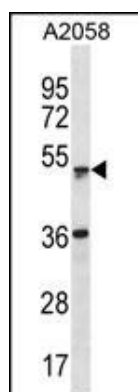
## References

---

Clough, R.L., et al. J. Neurochem. 110(5):1479-1490(2009)  
Carneiro, F.R., et al. Biochem. Biophys. Res. Commun. 343(1):260-268(2006)  
Scanlan, M.J., et al. Int. J. Cancer 83(4):456-464(1999)  
Rousseau-Merck, M.F., et al. Ann. Genet. 38(2):81-84(1995)  
Huebner, K., et al. Am. J. Hum. Genet. 48(4):726-740(1991)

## Images

---



ZSCAN21 Antibody (Center) (Cat. #AP19635c) western blot analysis in A2058 cell line lysates (35ug/lane). This demonstrates the ZSCAN21 antibody detected the ZSCAN21 protein (arrow).

Please note: All products are 'FOR RESEARCH USE ONLY. NOT FOR USE IN DIAGNOSTIC OR THERAPEUTIC PROCEDURES'.