

PIH1D1 Antibody(Center)

Affinity Purified Rabbit Polyclonal Antibody (Pab)

Catalog # AP19637c

Product Information

Application	WB, E
Primary Accession	Q9NWS0
Other Accession	NP_060386.1
Reactivity	Human
Host	Rabbit
Clonality	Polyclonal
Isotype	Rabbit IgG
Clone Names	RB40472
Calculated MW	32363
Antigen Region	163-192

Additional Information

Gene ID	55011
Other Names	PIH1 domain-containing protein 1, Nucleolar protein 17 homolog, PIH1D1, NOP17
Target/Specificity	This PIH1D1 antibody is generated from rabbits immunized with a KLH conjugated synthetic peptide between 163-192 amino acids from the Central region of human PIH1D1.
Dilution	WB~~1:1000 E~~Use at an assay dependent concentration.
Format	Purified polyclonal antibody supplied in PBS with 0.09% (W/V) sodium azide. This antibody is purified through a protein A column, followed by peptide affinity purification.
Storage	Maintain refrigerated at 2-8°C for up to 2 weeks. For long term storage store at -20°C in small aliquots to prevent freeze-thaw cycles.
Precautions	PIH1D1 Antibody(Center) is for research use only and not for use in diagnostic or therapeutic procedures.

Protein Information

Name	PIH1D1
Synonyms	NOP17
Function	Involved in the assembly of C/D box small nucleolar ribonucleoprotein

(snoRNP) particles (PubMed:[17636026](#)). Recruits the SWI/SNF complex to the core promoter of rRNA genes and enhances pre- rRNA transcription (PubMed:[22368283](#), PubMed:[24036451](#)). Mediates interaction of TELO2 with the R2TP complex which is necessary for the stability of MTOR and SMG1 (PubMed:[20864032](#)). Positively regulates the assembly and activity of the mTORC1 complex (PubMed:[24036451](#)).

Cellular Location

Nucleus {ECO:0000250|UniProtKB:Q9CQJ2}.

Tissue Location

Expressed at low levels in normal mammary epithelial cells (at protein level) (PubMed:24036451). Highest expression in lung, leukocyte and placenta. Expressed at lower levels in brain, prostate, colon, heart, small intestine, liver, ovary, pancreas, skeletal muscle, spleen, testis and thymus (PubMed:21078300)

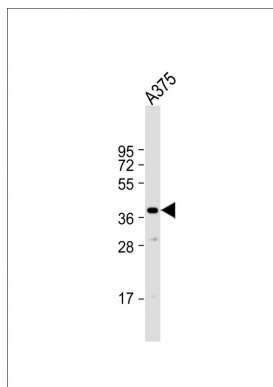
Background

PIH1D1 belongs to the PIH1 family.

References

Cloutier, P., et al. Methods 48(4):381-386(2009)
McKeegan, K.S., et al. Mol. Cell. Biol. 27(19):6782-6793(2007)
Lamesch, P., et al. Genomics 89(3):307-315(2007)
Gonzales, F.A., et al. J. Mol. Biol. 346(2):437-455(2005)

Images



Anti-PIH1D1 Antibody (Center) at 1:1000 dilution + A375 whole cell lysate Lysates/proteins at 20 µg per lane. Secondary Goat Anti-Rabbit IgG, (H+L), Peroxidase conjugated at 1/10000 dilution. Predicted band size : 32 kDa Blocking/Dilution buffer: 5% NFDM/TBST.

Please note: All products are 'FOR RESEARCH USE ONLY. NOT FOR USE IN DIAGNOSTIC OR THERAPEUTIC PROCEDURES'.