

# PODN Antibody(C-term)

Affinity Purified Rabbit Polyclonal Antibody (Pab)

Catalog # AP19650b

## Product Information

---

Application	WB, E
Primary Accession	<a href="#">Q7Z5L7</a>
Other Accession	<a href="#">NP_714914.2</a>
Reactivity	Human
Host	Rabbit
Clonality	Polyclonal
Isotype	Rabbit IgG
Clone Names	RB40886
Calculated MW	68976
Antigen Region	571-602

## Additional Information

---

Gene ID	127435
Other Names	Podocan, PODN, SLRR5A
Target/Specificity	This PODN antibody is generated from rabbits immunized with a KLH conjugated synthetic peptide between 571-602 amino acids from the C-terminal region of human PODN.
Dilution	WB~~1:1000 E~~Use at an assay dependent concentration.
Format	Purified polyclonal antibody supplied in PBS with 0.09% (W/V) sodium azide. This antibody is purified through a protein A column, followed by peptide affinity purification.
Storage	Maintain refrigerated at 2-8°C for up to 2 weeks. For long term storage store at -20°C in small aliquots to prevent freeze-thaw cycles.
Precautions	PODN Antibody(C-term) is for research use only and not for use in diagnostic or therapeutic procedures.

## Protein Information

---

Name	PODN
Synonyms	SLRR5A
Function	Negatively regulates cell proliferation and cell migration.

<b>Cellular Location</b>	[Isoform 1]: Secreted, extracellular space, extracellular matrix [Isoform 3]: Cytoplasm.
<b>Tissue Location</b>	Kidney, heart, liver, pancreas and vascular smooth muscle cells. Also detected in aortic intima (at protein level)

## Background

---

Negatively regulates cell proliferation and cell migration.

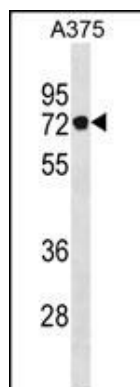
## References

---

Bailey, S.D., et al. Diabetes Care 33(10):2250-2253(2010)  
Talmud, P.J., et al. Am. J. Hum. Genet. 85(5):628-642(2009)  
Shimizu-Hirota, R., et al. FEBS Lett. 563 (1-3), 69-74 (2004) :  
Clark, H.F., et al. Genome Res. 13(10):2265-2270(2003)  
Ross, M.D., et al. J. Biol. Chem. 278(35):33248-33255(2003)

## Images

---



PODN Antibody (C-term) (Cat. #AP19650b) western blot analysis in A375 cell line lysates (35ug/lane). This demonstrates the PODN antibody detected the PODN protein (arrow).

Please note: All products are 'FOR RESEARCH USE ONLY. NOT FOR USE IN DIAGNOSTIC OR THERAPEUTIC PROCEDURES'.