

# LGALS7 Antibody(Center)

Affinity Purified Rabbit Polyclonal Antibody (Pab)

Catalog # AP19680c

## Product Information

---

|                          |  |
|--------------------------|--|
| <b>Application</b>       | WB, E  |
| <b>Primary Accession</b> | <a href="#">P47929</a>                                       |
| <b>Other Accession</b>   | <a href="#">NP_001035972.1</a> , <a href="#">NP_002298.1</a> |
| <b>Reactivity</b>        | Human  |
| <b>Host</b>              | Rabbit   |
| <b>Clonality</b>         | Polyclonal   |
| <b>Isotype</b>           | Rabbit IgG   |
| <b>Clone Names</b>       | RB31765  |
| <b>Calculated MW</b>     | 15075  |
| <b>Antigen Region</b>    | 54-82  |

## Additional Information

---

|                           |  |
|---------------------------|--|
| <b>Gene ID</b>            | 3963;653499  |
| <b>Other Names</b>        | Galectin-7, Gal-7, HKL-14, PI7, p53-induced gene 1 protein, LGALS7, PIG1   |
| <b>Target/Specificity</b> | This LGALS7 antibody is generated from rabbits immunized with a KLH conjugated synthetic peptide between 54-82 amino acids from the Central region of human LGALS7.          |
| <b>Dilution</b>           | WB~~1:1000 E~~Use at an assay dependent concentration.   |
| <b>Format</b>             | Purified polyclonal antibody supplied in PBS with 0.09% (W/V) sodium azide. This antibody is purified through a protein A column, followed by peptide affinity purification. |
| <b>Storage</b>            | Maintain refrigerated at 2-8°C for up to 2 weeks. For long term storage store at -20°C in small aliquots to prevent freeze-thaw cycles.                                      |
| <b>Precautions</b>        | LGALS7 Antibody(Center) is for research use only and not for use in diagnostic or therapeutic procedures.  |

## Protein Information

---

|                 |  |
|-----------------|--|
| <b>Name</b>     | LGALS7   |
| <b>Synonyms</b> | PIG1   |
| <b>Function</b> | Could be involved in cell-cell and/or cell-matrix interactions necessary for normal growth control. Pro-apoptotic protein that functions intracellularly |

upstream of JNK activation and cytochrome c release.

**Cellular Location**

Cytoplasm. Nucleus. Secreted. Note=May be secreted by a non-classical secretory pathway

**Tissue Location**

Mainly expressed in stratified squamous epithelium.

## Background

---

The galectins are a family of beta-galactoside-binding proteins implicated in modulating cell-cell and cell-matrix interactions. Differential and in situ hybridization studies indicate that this lectin is specifically expressed in keratinocytes and found mainly in stratified squamous epithelium. A duplicate copy of this gene (GeneID:653499) is found adjacent to, but on the opposite strand on chromosome 19.

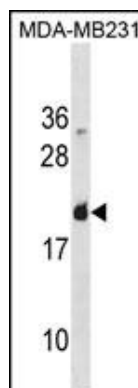
## References

---

Demers, M., et al. Am. J. Pathol. 176(6):3023-3031(2010)  
Zhu, X., et al. BMC Cancer 10, 290 (2010) :  
Park, J.E., et al. Oncol. Rep. 22(6):1373-1379(2009)  
Demers, M., et al. Biochem. Biophys. Res. Commun. 387(3):425-429(2009)  
Saussez, S., et al. Int. J. Oncol. 34(2):433-439(2009)

## Images

---



LGALS7 Antibody (Center) (Cat. #AP19680c) western blot analysis in MDA-MB231 cell line lysates (35ug/lane). This demonstrates the LGALS7 antibody detected the LGALS7 protein (arrow).

Please note: All products are 'FOR RESEARCH USE ONLY. NOT FOR USE IN DIAGNOSTIC OR THERAPEUTIC PROCEDURES'.