

OR1S2 Antibody(C-term)

Affinity Purified Rabbit Polyclonal Antibody (Pab)
Catalog # AP19686b

Product Information

| | |
|--------------------------|--------------------------------|
| Application | WB, E |
| Primary Accession | Q8NGQ3 |
| Other Accession | NP_001004459.1 |
| Reactivity | Human |
| Host | Rabbit |
| Clonality | Polyclonal |
| Isotype | Rabbit IgG |
| Clone Names | RB40637 |
| Antigen Region | 221-249 |

Additional Information

| | |
|---------------------------|--|
| Other Names | Olfactory receptor 1S2, Olfactory receptor OR11-231, OR1S2 |
| Target/Specificity | This OR1S2 antibody is generated from rabbits immunized with a KLH conjugated synthetic peptide between 221-249 amino acids from the C-terminal region of human OR1S2. |
| Dilution | WB~~1:1000 E~~Use at an assay dependent concentration. |
| Format | Purified polyclonal antibody supplied in PBS with 0.09% (W/V) sodium azide. This antibody is purified through a protein A column, followed by peptide affinity purification. |
| Storage | Maintain refrigerated at 2-8°C for up to 2 weeks. For long term storage store at -20°C in small aliquots to prevent freeze-thaw cycles. |
| Precautions | OR1S2 Antibody(C-term) is for research use only and not for use in diagnostic or therapeutic procedures. |

Protein Information

Background

Olfactory receptors interact with odorant molecules in the nose, to initiate a neuronal response that triggers the perception of a smell. The olfactory receptor proteins are members of a large family of G-protein-coupled receptors (GPCR) arising from single coding-exon genes. Olfactory receptors share a 7-transmembrane domain structure with many neurotransmitter and hormone receptors and are responsible for the recognition and G protein-mediated transduction of odorant signals. The olfactory receptor gene family is the largest in the genome. The nomenclature assigned to the olfactory receptor

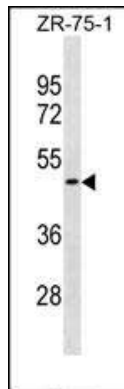
genes and proteins for this organism is independent of other organisms.

References

Malnic, B., et al. Proc. Natl. Acad. Sci. U.S.A. 101(8):2584-2589(2004)

Fuchs, T., et al. Genomics 80(3):295-302(2002)

Images



OR1S2 Antibody (C-term) (Cat. #AP19686b) western blot analysis in ZR-75-1 cell line lysates (35ug/lane). This demonstrates the OR1S2 antibody detected the OR1S2 protein (arrow).

Please note: All products are 'FOR RESEARCH USE ONLY. NOT FOR USE IN DIAGNOSTIC OR THERAPEUTIC PROCEDURES'.