

IL17RE Antibody(N-term)

Affinity Purified Rabbit Polyclonal Antibody (Pab)

Catalog # AP19700a

Product Information

Application	WB, E
Primary Accession	Q8NFR9
Other Accession	NP_001180309.1 , NP_705613.1 , NP_705616.2
Reactivity	Human
Host	Rabbit
Clonality	Polyclonal
Isotype	Rabbit IgG
Clone Names	RB40903
Calculated MW	74810
Antigen Region	87-116

Additional Information

Gene ID	132014
Other Names	Interleukin-17 receptor E, IL-17 receptor E, IL-17RE, IL17RE
Target/Specificity	This IL17RE antibody is generated from rabbits immunized with a KLH conjugated synthetic peptide between 87-116 amino acids from the N-terminal region of human IL17RE.
Dilution	WB~~1:1000 E~~Use at an assay dependent concentration.
Format	Purified polyclonal antibody supplied in PBS with 0.09% (W/V) sodium azide. This antibody is purified through a protein A column, followed by peptide affinity purification.
Storage	Maintain refrigerated at 2-8°C for up to 2 weeks. For long term storage store at -20°C in small aliquots to prevent freeze-thaw cycles.
Precautions	IL17RE Antibody(N-term) is for research use only and not for use in diagnostic or therapeutic procedures.

Protein Information

Name	IL17RE
Function	Specific functional receptor for IL17C. May be signaling through the NF-kappa-B and MAPK pathways. May require TRAF3IP2 /ACT1 for signaling. May be a crucial regulator in innate immunity to bacterial pathogens. Isoform 2 and isoform 4 may be either cytoplasmic inactive or dominant active forms.

Isoform 3 and isoform 5 may act as soluble decoy receptors.

Cellular Location

[Isoform 1]: Cell membrane; Single-pass type I membrane protein [Isoform 3]: Secreted. [Isoform 5]: Secreted.

Tissue Location

Predominantly expressed in mucosal tissues with high levels in keratinocytes and colon epithelial cells. Very low expression in dermal fibroblasts. Expressed in various tumor cell lines.

Background

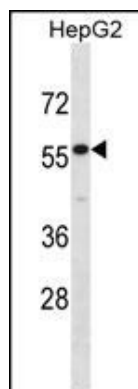
This gene encodes a protein that shares limited similarity with the interleukin-17 receptor. The function of the encoded protein has not yet been determined. Alternatively spliced transcript variants have been described.

References

Eid, N.A., et al. Malar. J. 9, 119 (2010) :

Clark, H.F., et al. Genome Res. 13(10):2265-2270(2003)

Images



IL17RE Antibody (N-term) (Cat. #AP19700a) western blot analysis in HepG2 cell line lysates (35ug/lane). This demonstrates the IL17RE antibody detected the IL17RE protein (arrow).

Please note: All products are 'FOR RESEARCH USE ONLY. NOT FOR USE IN DIAGNOSTIC OR THERAPEUTIC PROCEDURES'.