

ANXA6 Antibody(C-term)

Affinity Purified Rabbit Polyclonal Antibody (Pab)

Catalog # AP19706b

Product Information

Application	WB, E
Primary Accession	P08133
Other Accession	P79134 , NP_001146.2 , NP_001180473.1
Reactivity	Human
Predicted	Bovine
Host	Rabbit
Clonality	Polyclonal
Isotype	Rabbit IgG
Clone Names	RB40950
Calculated MW	75873
Antigen Region	147-175

Additional Information

Gene ID	309
Other Names	Annexin A6, 67 kDa calelectrin, Annexin VI, Annexin-6, Calphobindin-II, CPB-II, Chromobindin-20, Lipocortin VI, Protein III, p68, p70, ANXA6, ANX6
Target/Specificity	This ANXA6 antibody is generated from rabbits immunized with a KLH conjugated synthetic peptide between 147-175 amino acids from the C-terminal region of human ANXA6.
Dilution	WB~~1:1000 E~~Use at an assay dependent concentration.
Format	Purified polyclonal antibody supplied in PBS with 0.09% (W/V) sodium azide. This antibody is purified through a protein A column, followed by peptide affinity purification.
Storage	Maintain refrigerated at 2-8°C for up to 2 weeks. For long term storage store at -20°C in small aliquots to prevent freeze-thaw cycles.
Precautions	ANXA6 Antibody(C-term) is for research use only and not for use in diagnostic or therapeutic procedures.

Protein Information

Name	ANXA6
Synonyms	ANX6

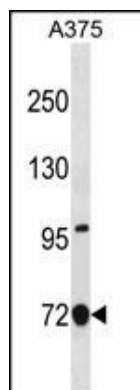
Function May associate with CD21. May regulate the release of Ca(2+) from intracellular stores.

Cellular Location Cytoplasm. Melanosome. Note=Identified by mass spectrometry in melanosome fractions from stage I to stage IV

Background

ANXA6 may associate with CD21. May regulate the release of Ca(2+) from intracellular stores.

Images



ANXA6 Antibody (C-term) (Cat. #AP19706b) western blot analysis in A375 cell line lysates (35ug/lane). This demonstrates the ANXA6 antibody detected the ANXA6 protein (arrow).

Please note: All products are 'FOR RESEARCH USE ONLY. NOT FOR USE IN DIAGNOSTIC OR THERAPEUTIC PROCEDURES'.