

MKRN1 Antibody(Center)

Affinity Purified Rabbit Polyclonal Antibody (Pab)

Catalog # AP19708c

Product Information

Application	WB, E
Primary Accession	Q9UHC7
Other Accession	NP_038474.2
Reactivity	Human
Host	Rabbit
Clonality	Polyclonal
Isotype	Rabbit IgG
Clone Names	RB40959
Calculated MW	53349
Antigen Region	184-213

Additional Information

Gene ID	23608
Other Names	E3 ubiquitin-protein ligase makorin-1, 632-, RING finger protein 61, MKRN1, RNF61
Target/Specificity	This MKRN1 antibody is generated from rabbits immunized with a KLH conjugated synthetic peptide between 184-213 amino acids from the Central region of human MKRN1.
Dilution	WB~~1:1000 E~~Use at an assay dependent concentration.
Format	Purified polyclonal antibody supplied in PBS with 0.09% (W/V) sodium azide. This antibody is purified through a protein A column, followed by peptide affinity purification.
Storage	Maintain refrigerated at 2-8°C for up to 2 weeks. For long term storage store at -20°C in small aliquots to prevent freeze-thaw cycles.
Precautions	MKRN1 Antibody(Center) is for research use only and not for use in diagnostic or therapeutic procedures.

Protein Information

Name	MKRN1
Synonyms	RNF61
Function	E3 ubiquitin ligase catalyzing the covalent attachment of ubiquitin moieties

onto substrate proteins. These substrates include FILIP1, p53/TP53, CDKN1A and TERT. Keeps cells alive by suppressing p53/TP53 under normal conditions, but stimulates apoptosis by repressing CDKN1A under stress conditions. Acts as a negative regulator of telomerase. Has negative and positive effects on RNA polymerase II- dependent transcription.

Tissue Location

Ubiquitous.

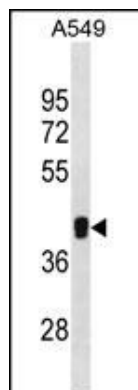
Background

The Makorin ring finger protein-1 gene (MKRN1) is a highly transcribed, intron-containing source for a family of intronless mammalian genes encoding a novel class of zinc finger proteins. Phylogenetic analyses indicate that the MKRN1 gene is the ancestral founder of this gene family (Gray et al., 2000 [PubMed 10843807]).

References

Rose, J. Phd, et al. Mol. Med. (2010) In press :
Ko, A., et al. J. Virol. 84(1):426-436(2010)
Lee, E.W., et al. EMBO J. 28(14):2100-2113(2009)
Shimada, H., et al. BMC Cancer 9, 232 (2009) :
Omwancha, J., et al. Endocrine 29(2):363-373(2006)

Images



MKRN1 Antibody (Center) (Cat. #AP19708c) western blot analysis in A549 cell line lysates (35ug/lane). This demonstrates the MKRN1 antibody detected the MKRN1 protein (arrow).

Please note: All products are 'FOR RESEARCH USE ONLY. NOT FOR USE IN DIAGNOSTIC OR THERAPEUTIC PROCEDURES'.