

# MAN2C1 Antibody(N-term)

Affinity Purified Rabbit Polyclonal Antibody (Pab)

Catalog # AP19732a

## Product Information

---

<b>Application</b>	WB, E
<b>Primary Accession</b>	<a href="#">Q9NTJ4</a>
<b>Other Accession</b>	<a href="#">NP_006706.2</a>
<b>Reactivity</b>	Human
<b>Host</b>	Rabbit
<b>Clonality</b>	Polyclonal
<b>Isotype</b>	Rabbit IgG
<b>Clone Names</b>	RB41557
<b>Calculated MW</b>	115835
<b>Antigen Region</b>	113-142

## Additional Information

---

<b>Gene ID</b>	4123
<b>Other Names</b>	Alpha-mannosidase 2C1, Alpha mannosidase 6A8B, Alpha-D-mannoside mannosidase, Mannosidase alpha class 2C member 1, MAN2C1, MANA, MANA1
<b>Target/Specificity</b>	This MAN2C1 antibody is generated from rabbits immunized with a KLH conjugated synthetic peptide between 113-142 amino acids from the N-terminal region of human MAN2C1.
<b>Dilution</b>	WB~~1:1000 E~~Use at an assay dependent concentration.
<b>Format</b>	Purified polyclonal antibody supplied in PBS with 0.09% (W/V) sodium azide. This antibody is purified through a protein A column, followed by peptide affinity purification.
<b>Storage</b>	Maintain refrigerated at 2-8°C for up to 2 weeks. For long term storage store at -20°C in small aliquots to prevent freeze-thaw cycles.
<b>Precautions</b>	MAN2C1 Antibody(N-term) is for research use only and not for use in diagnostic or therapeutic procedures.

## Protein Information

---

<b>Name</b>	MAN2C1
<b>Synonyms</b>	MANA, MANA1

<b>Function</b>	Cleaves alpha 1,2-, alpha 1,3-, and alpha 1,6-linked mannose residues on cytoplasmic free oligosaccharides generated by N- glycoprotein degradation pathways.
<b>Cellular Location</b>	Cytoplasm.

## Background

---

MAN2C1 belongs to the glycosyl hydrolase 38 family.

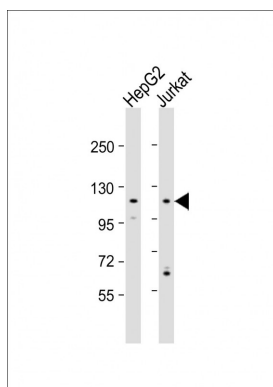
## References

---

Xiang, Z.G., et al. Transgenic Res. 19(1):67-75(2010)  
Tian, Y., et al. Cancer Sci. 99(12):2428-2434(2008)  
Olsen, J.V., et al. Cell 127(3):635-648(2006)  
Olsen, J.V., et al. Cell 127(3):635-648(2006)  
Qu, L., et al. Cell Res. 16(7):622-631(2006)

## Images

---



All lanes : Anti-MAN2C1 Antibody (N-term) at 1:1000 dilution  
Lane 1: HepG2 whole cell lysate  
Lane 2: Jurkat whole cell lysate  
Lysates/proteins at 20 µg per lane.  
Secondary Goat Anti-Rabbit IgG, (H+L), Peroxidase conjugated at 1/10000 dilution.  
Predicted band size : 116 kDa  
Blocking/Dilution buffer: 5% NFDM/TBST.

Please note: All products are 'FOR RESEARCH USE ONLY. NOT FOR USE IN DIAGNOSTIC OR THERAPEUTIC PROCEDURES'.