

# UBE2R2 Antibody (Center)

Affinity Purified Rabbit Polyclonal Antibody (Pab)

Catalog # AP19755c

## Product Information

---

<b>Application</b>	WB, E
<b>Primary Accession</b>	<a href="#">Q712K3</a>
<b>Other Accession</b>	<a href="#">Q29503</a> , <a href="#">Q6ZWZ2</a> , <a href="#">NP_060281.2</a>
<b>Reactivity</b>	Human
<b>Predicted</b>	Mouse, Rabbit
<b>Host</b>	Rabbit
<b>Clonality</b>	Polyclonal
<b>Isotype</b>	Rabbit IgG
<b>Clone Names</b>	RB30672
<b>Calculated MW</b>	27166
<b>Antigen Region</b>	141-169

## Additional Information

---

<b>Gene ID</b>	54926
<b>Other Names</b>	Ubiquitin-conjugating enzyme E2 R2, Ubiquitin carrier protein R2, Ubiquitin-conjugating enzyme E2-CDC34B, Ubiquitin-protein ligase R2, UBE2R2, CDC34B, UBC3B
<b>Target/Specificity</b>	This UBE2R2 antibody is generated from rabbits immunized with a KLH conjugated synthetic peptide between 141-169 amino acids from the Central region of human UBE2R2.
<b>Dilution</b>	WB~~1:1000 E~~Use at an assay dependent concentration.
<b>Format</b>	Purified polyclonal antibody supplied in PBS with 0.09% (W/V) sodium azide. This antibody is purified through a protein A column, followed by peptide affinity purification.
<b>Storage</b>	Maintain refrigerated at 2-8°C for up to 2 weeks. For long term storage store at -20°C in small aliquots to prevent freeze-thaw cycles.
<b>Precautions</b>	UBE2R2 Antibody (Center) is for research use only and not for use in diagnostic or therapeutic procedures.

## Protein Information

---

<b>Name</b>	UBE2R2
<b>Synonyms</b>	CDC34B, UBC3B

## Function

E2 ubiquitin-conjugating enzyme that accepts ubiquitin from an E1 ubiquitin-activating protein, and catalyzes its covalent attachment to other proteins by an E3 ubiquitin-protein ligase complex (PubMed:[12037680](#), PubMed:[20061386](#), PubMed:[38326650](#)). In vitro catalyzes monoubiquitination and 'Lys-48'-linked polyubiquitination (PubMed:[12037680](#), PubMed:[20061386](#), PubMed:[38326650](#)). Works in collaboration with various Cul1-RING and Cul2-RING E3 ligase complexes (PubMed:[38326650](#)). May be involved in degradation of katenin (PubMed:[12037680](#)).

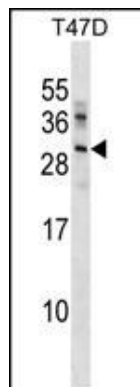
## Background

Protein kinase CK2 is a ubiquitous and pleiotropic Ser/Thr protein kinase involved in cell growth and transformation. This gene encodes a protein similar to the E2 ubiquitin conjugating enzyme UBC3/CDC34. Studies suggest that CK2-dependent phosphorylation of this ubiquitin-conjugating enzyme functions by regulating beta-TrCP substrate recognition and induces its interaction with beta-TrCP, enhancing beta-catenin degradation.

## References

Rose, J.E., et al. Mol. Med. 16 (7-8), 247-253 (2010) :  
Yoshida, T., et al. Int. J. Mol. Med. 25(4):649-656(2010)  
Oguri, M., et al. Am. J. Hypertens. 23(1):70-77(2010)  
Ferreira, M.A., et al. Nat. Genet. 40(9):1056-1058(2008)  
Humphray, S.J., et al. Nature 429(6990):369-374(2004)

## Images



UBE2R2 Antibody (Center) (Cat. #AP19755c) western blot analysis in T47D cell line lysates (35ug/lane). This demonstrates the UBE2R2 antibody detected the UBE2R2 protein (arrow).

Please note: All products are 'FOR RESEARCH USE ONLY. NOT FOR USE IN DIAGNOSTIC OR THERAPEUTIC PROCEDURES'.