

## C8B Antibody (C-term)

Affinity Purified Rabbit Polyclonal Antibody (Pab)

Catalog # AP19757b

### Product Information

---

<b>Application</b>	WB, E
<b>Primary Accession</b>	<a href="#">P07358</a>
<b>Other Accession</b>	<a href="#">NP_000057.1</a>
<b>Reactivity</b>	Human
<b>Host</b>	Rabbit
<b>Clonality</b>	Polyclonal
<b>Isotype</b>	Rabbit IgG
<b>Clone Names</b>	RB30678
<b>Calculated MW</b>	66948
<b>Antigen Region</b>	393-422

### Additional Information

---

<b>Gene ID</b>	732
<b>Other Names</b>	Complement component C8 beta chain, Complement component 8 subunit beta, C8B
<b>Target/Specificity</b>	This C8B antibody is generated from rabbits immunized with a KLH conjugated synthetic peptide between 393-422 amino acids from the C-terminal region of human C8B.
<b>Dilution</b>	WB~~1:1000 E~~Use at an assay dependent concentration.
<b>Format</b>	Purified polyclonal antibody supplied in PBS with 0.09% (W/V) sodium azide. This antibody is purified through a protein A column, followed by peptide affinity purification.
<b>Storage</b>	Maintain refrigerated at 2-8°C for up to 2 weeks. For long term storage store at -20°C in small aliquots to prevent freeze-thaw cycles.
<b>Precautions</b>	C8B Antibody (C-term) is for research use only and not for use in diagnostic or therapeutic procedures.

### Protein Information

---

<b>Name</b>	C8B ( <a href="#">HGNC:1353</a> )
<b>Function</b>	Component of the membrane attack complex (MAC), a multiprotein complex activated by the complement cascade, which inserts into a target cell membrane and forms a pore, leading to target cell membrane rupture and

cell lysis (PubMed:[22832194](#), PubMed:[26841837](#), PubMed:[27052168](#), PubMed:[30552328](#), PubMed:[7440581](#)). The MAC is initiated by proteolytic cleavage of C5 into complement C5b in response to the classical, alternative, lectin and GZMK complement pathways (PubMed:[30552328](#), PubMed:[7440581](#)). The complement pathways consist in a cascade of proteins that leads to phagocytosis and breakdown of pathogens and signaling that strengthens the adaptive immune system (PubMed:[30552328](#), PubMed:[7440581](#)). C8B, together with C8A and C8G, inserts into the target membrane, but does not form pores by itself (PubMed:[30552328](#)). During MAC assembly, associates with C5b, C6 and C7 to form the C5b8 intermediate complex that inserts into the target membrane and traverses the bilayer increasing membrane rigidity (PubMed:[30552328](#), PubMed:[6833260](#)).

#### Cellular Location

Secreted. Target cell membrane; Multi-pass membrane protein.  
Note=Secreted as soluble protein (PubMed:[30552328](#)). Inserts into the cell membrane of target cells (PubMed:[30552328](#), PubMed:[31061395](#))

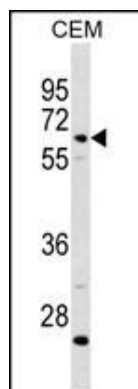
## Background

C8 beta is one of the three subunits that comprise the component 8 (C8) of the complement system. C8 participates in the formation of Membrane Attack Complex that results in the lysis of cells. Patients with C8B deficiency are prone to bacteria infection.

## References

Han, S., et al. Hum. Immunol. 71(7):727-730(2010)  
Rajaraman, P., et al. Cancer Epidemiol. Biomarkers Prev. 19(5):1356-1361(2010)  
Davila, S., et al. Genes Immun. 11(3):232-238(2010)  
Gancz, D., et al. Mol. Immunol. 47 (2-3), 310-317 (2009) :  
Rajaraman, P., et al. Cancer Epidemiol. Biomarkers Prev. 18(5):1651-1658(2009)

## Images



C8B Antibody (C-term) (Cat. #AP19757b) western blot analysis in CEM cell line lysates (35ug/lane). This demonstrates the C8B antibody detected the C8B protein (arrow).

Please note: All products are 'FOR RESEARCH USE ONLY. NOT FOR USE IN DIAGNOSTIC OR THERAPEUTIC PROCEDURES'.