

PDE6H Antibody(Center)

Affinity Purified Rabbit Polyclonal Antibody (Pab)

Catalog # AP19799c

Product Information

Application	WB, E
Primary Accession	Q13956
Other Accession	P09174 , P18545 , P04972 , P61250 , P61249 , P22571 , NP_006196.1
Reactivity	Human, Mouse
Predicted	Bovine, Rat, Human
Host	Rabbit
Clonality	Polyclonal
Isotype	Rabbit IgG
Clone Names	RB40887
Calculated MW	9074
Antigen Region	4-33

Additional Information

Gene ID	5149
Other Names	Retinal cone rhodopsin-sensitive cGMP 3', 5'-cyclic phosphodiesterase subunit gamma, GMP-PDE gamma, PDE6H
Target/Specificity	This PDE6H antibody is generated from rabbits immunized with a KLH conjugated synthetic peptide between 4-33 amino acids from the Central region of human PDE6H.
Dilution	WB~~1:1000 E~~Use at an assay dependent concentration.
Format	Purified polyclonal antibody supplied in PBS with 0.09% (W/V) sodium azide. This antibody is purified through a protein A column, followed by peptide affinity purification.
Storage	Maintain refrigerated at 2-8°C for up to 2 weeks. For long term storage store at -20°C in small aliquots to prevent freeze-thaw cycles.
Precautions	PDE6H Antibody(Center) is for research use only and not for use in diagnostic or therapeutic procedures.

Protein Information

Name	PDE6H
Function	Participates in processes of transmission and amplification of the visual signal. cGMP-PDEs are the effector molecules in G- protein-mediated

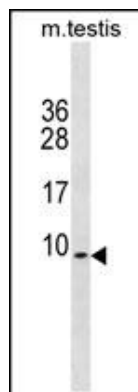
Background

This gene encodes the inhibitory (or gamma) subunit of the cone-specific cGMP phosphodiesterase, which is a tetramer composed of two catalytic chains (alpha and beta), and two inhibitory chains (gamma). It is specifically expressed in the retina, and is involved in the transmission and amplification of the visual signal. Mutations in this gene are associated with retinal cone dystrophy type 3A (RCD3A).

References

Rose, J.E., et al. Mol. Med. 16 (7-8), 247-253 (2010) :
Lamesch, P., et al. Genomics 89(3):307-315(2007)
Piri, N., et al. Ophthalmology 112(1):159-166(2005)
Kajimura, N., et al. J. Struct. Biol. 139(1):27-38(2002)
Shimizu-Matsumoto, A., et al. Genomics 32(1):121-124(1996)

Images



PDE6H Antibody (Center) (Cat. #AP19799c) western blot analysis in mouse testis tissue lysates (35ug/lane). This demonstrates the PDE6H antibody detected the PDE6H protein (arrow).

Please note: All products are 'FOR RESEARCH USE ONLY. NOT FOR USE IN DIAGNOSTIC OR THERAPEUTIC PROCEDURES'.