

SUB1 Antibody(Center)

Affinity Purified Rabbit Polyclonal Antibody (Pab)

Catalog # AP19807c

Product Information

Application	WB, E
Primary Accession	P53999
Other Accession	Q4R947 , NP_006704.3
Reactivity	Human
Predicted	Monkey
Host	Rabbit
Clonality	Polyclonal
Isotype	Rabbit IgG
Clone Names	RB40953
Calculated MW	14395
Antigen Region	18-47

Additional Information

Gene ID	10923
Other Names	Activated RNA polymerase II transcriptional coactivator p15, Positive cofactor 4, PC4, SUB1 homolog, p14, SUB1, PC4, RPO2TC1
Target/Specificity	This SUB1 antibody is generated from rabbits immunized with a KLH conjugated synthetic peptide between 18-47 amino acids from the Central region of human SUB1.
Dilution	WB~~1:1000 E~~Use at an assay dependent concentration.
Format	Purified polyclonal antibody supplied in PBS with 0.09% (W/V) sodium azide. This antibody is purified through a protein A column, followed by peptide affinity purification.
Storage	Maintain refrigerated at 2-8°C for up to 2 weeks. For long term storage store at -20°C in small aliquots to prevent freeze-thaw cycles.
Precautions	SUB1 Antibody(Center) is for research use only and not for use in diagnostic or therapeutic procedures.

Protein Information

Name	SUB1
Synonyms	PC4, RPO2TC1

Function	General coactivator that functions cooperatively with TAFs and mediates functional interactions between upstream activators and the general transcriptional machinery. May be involved in stabilizing the multiprotein transcription complex. Binds single-stranded DNA. Also binds, in vitro, non-specifically to double-stranded DNA (ds DNA).
Cellular Location	Nucleus.

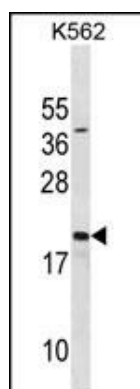
Background

General coactivator that functions cooperatively with TAFs and mediates functional interactions between upstream activators and the general transcriptional machinery. May be involved in stabilizing the multiprotein transcription complex. Binds single-stranded DNA. Also binds, in vitro, non-specifically to double-stranded DNA (ds DNA).

References

Das, C., et al. J. Mol. Biol. 397(1):1-12(2010)
Rajagopalan, S., et al. J. Biol. Chem. 284(32):21728-21737(2009)
Mortusewicz, O., et al. J. Cell Biol. 183(5):769-776(2008)
Batta, K., et al. Mol. Cell. Biol. 27(21):7603-7614(2007)
Olsen, J.V., et al. Cell 127(3):635-648(2006)

Images



SUB1 Antibody (Center) (Cat. #AP19807c) western blot analysis in K562 cell line lysates (35ug/lane). This demonstrates the SUB1 antibody detected the SUB1 protein (arrow).

Please note: All products are 'FOR RESEARCH USE ONLY. NOT FOR USE IN DIAGNOSTIC OR THERAPEUTIC PROCEDURES'.