

PRSS36 Antibody(Center)

Affinity Purified Rabbit Polyclonal Antibody (Pab)

Catalog # AP19812c

Product Information

Application	WB, E
Primary Accession	Q5K4E3
Other Accession	NP_775773.2
Reactivity	Human
Host	Rabbit
Clonality	Polyclonal
Isotype	Rabbit IgG
Clone Names	RB40961
Calculated MW	91955
Antigen Region	288-317

Additional Information

Gene ID	146547
Other Names	Polyserase-2, 3421-, Polyserine protease 2, Serine protease 36, PRSS36
Target/Specificity	This PRSS36 antibody is generated from rabbits immunized with a KLH conjugated synthetic peptide between 288-317 amino acids from the Central region of human PRSS36.
Dilution	WB~~1:1000 E~~Use at an assay dependent concentration.
Format	Purified polyclonal antibody supplied in PBS with 0.09% (W/V) sodium azide. This antibody is purified through a protein A column, followed by peptide affinity purification.
Storage	Maintain refrigerated at 2-8°C for up to 2 weeks. For long term storage store at -20°C in small aliquots to prevent freeze-thaw cycles.
Precautions	PRSS36 Antibody(Center) is for research use only and not for use in diagnostic or therapeutic procedures.

Protein Information

Name	PRSS36
Function	Serine protease. Hydrolyzes the peptides N-t-Boc-Gln-Ala-Arg- AMC and N-t-Boc-Gln-Gly-Arg-AMC and, to a lesser extent, N-t-Boc-Ala- Phe-Lys-AMC and N-t-Boc-Val-Leu-Lys-AMC. Has a preference for substrates with an Arg instead of a Lys residue in position P1.

Cellular Location	Secreted, extracellular space, extracellular matrix. Note=Not attached to membranes
Tissue Location	Expressed in fetal kidney, skeletal muscle, liver, placenta and heart. Also expressed in tumor cell lines derived from lung and colon adenocarcinomas.

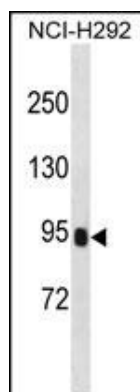
Background

Serine protease. Hydrolyzes the peptides N-t-Boc-Gln-Ala-Arg-AMC and N-t-Boc-Gln-Gly-Arg-AMC and, to a lesser extent, N-t-Boc-Ala-Phe-Lys-AMC and N-t-Boc-Val-Leu-Lys-AMC. Has a preference for substrates with an Arg instead of a Lys residue in position P1.

References

Oh, J.H., et al. Mamm. Genome 16(12):942-954(2005)
 Cal, S., et al. J. Biol. Chem. 280(3):1953-1961(2005)

Images



PRSS36 Antibody (Center) (Cat. #AP19812c) western blot analysis in NCI-H292 cell line lysates (35ug/lane). This demonstrates the PRSS36 antibody detected the PRSS36 protein (arrow).

Please note: All products are 'FOR RESEARCH USE ONLY. NOT FOR USE IN DIAGNOSTIC OR THERAPEUTIC PROCEDURES'.