

DAPL1 Antibody(N-term)

Affinity Purified Rabbit Polyclonal Antibody (Pab)

Catalog # AP19848a

Product Information

Application	WB, E
Primary Accession	A0PIW8
Other Accession	NP_001017920.2
Reactivity	Mouse
Host	Rabbit
Clonality	Polyclonal
Isotype	Rabbit IgG
Clone Names	RB41537
Calculated MW	11880
Antigen Region	20-48

Additional Information

Gene ID	92196
Other Names	Death-associated protein-like 1, Early epithelial differentiation-associated protein, DAPL1, EEDA
Target/Specificity	This DAPL1 antibody is generated from rabbits immunized with a KLH conjugated synthetic peptide between 20-48 amino acids from the N-terminal region of human DAPL1.
Dilution	WB~~1:1000 E~~Use at an assay dependent concentration.
Format	Purified polyclonal antibody supplied in PBS with 0.09% (W/V) sodium azide. This antibody is purified through a protein A column, followed by peptide affinity purification.
Storage	Maintain refrigerated at 2-8°C for up to 2 weeks. For long term storage store at -20°C in small aliquots to prevent freeze-thaw cycles.
Precautions	DAPL1 Antibody(N-term) is for research use only and not for use in diagnostic or therapeutic procedures.

Protein Information

Name	DAPL1
Synonyms	EEDA
Function	May play a role in the early stages of epithelial differentiation or in

apoptosis.

Tissue Location

Expressed in hair follicle (at protein level).

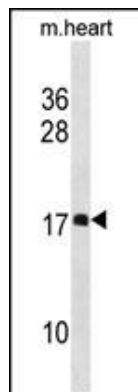
Background

DAPL1 may play a role in the early stages of epithelial differentiation or in apoptosis (By similarity).

References

Wistow, G., et al. Mol. Vis. 8, 171-184 (2002) :

Images



DAPL1 Antibody (N-term) (Cat. #AP19848a) western blot analysis in mouse heart tissue lysates (35ug/lane). This demonstrates the DAPL1 antibody detected the DAPL1 protein (arrow).

Please note: All products are 'FOR RESEARCH USE ONLY. NOT FOR USE IN DIAGNOSTIC OR THERAPEUTIC PROCEDURES'.