

SPRYD5 Antibody(N-term)

Affinity Purified Rabbit Polyclonal Antibody (Pab)

Catalog # AP19850a

Product Information

Application	WB, E
Primary Accession	Q9BSJ1
Other Accession	NP_116070.2
Reactivity	Human
Host	Rabbit
Clonality	Polyclonal
Isotype	Rabbit IgG
Clone Names	RB41540
Calculated MW	52285
Antigen Region	154-183

Additional Information

Gene ID	84767
Other Names	Tripartite motif-containing protein 51, SPRY domain-containing protein 5, TRIM51, SPRYD5
Target/Specificity	This SPRYD5 antibody is generated from rabbits immunized with a KLH conjugated synthetic peptide between 154-183 amino acids from the N-terminal region of human SPRYD5.
Dilution	WB~~1:1000 E~~Use at an assay dependent concentration.
Format	Purified polyclonal antibody supplied in PBS with 0.05% (V/V) Proclin 300. This antibody is purified through a protein A column, followed by peptide affinity purification.
Storage	Maintain refrigerated at 2-8°C for up to 2 weeks. For long term storage store at -20°C in small aliquots to prevent freeze-thaw cycles.
Precautions	SPRYD5 Antibody(N-term) is for research use only and not for use in diagnostic or therapeutic procedures.

Protein Information

Name	TRIM51
Synonyms	SPRYD5

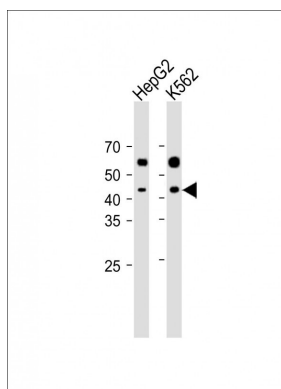
Background

The function of this protein is unknown.

References

Rual, J.F., et al. Nature 437(7062):1173-1178(2005)

Images



All lanes: Anti-SPRYD5 Antibody(N-term) at 1:1000 dilution Lane 1: HepG2 whole cell lysate Lane 2: K562 whole cell lysate Lysates/proteins at 20 µg per lane. Secondary: Goat Anti-Rabbit IgG, (H+L), Peroxidase conjugated (ASP1615) at 1/15000 dilution. Observed band size: 44. 5 KDa Blocking/Dilution buffer: 5% NFDM/TBST.

Please note: All products are 'FOR RESEARCH USE ONLY. NOT FOR USE IN DIAGNOSTIC OR THERAPEUTIC PROCEDURES'.