

RBMY1A1 Antibody(C-term)

Affinity Purified Rabbit Polyclonal Antibody (Pab)

Catalog # AP19859b

Product Information

Application	WB, E
Primary Accession	P0DJD3
Other Accession	Q15415 , A6NEQ0 , P0C7P1 , P0DJD4 , A6NDE4 , Q15414 , NP_005049.1
Reactivity	Human
Host	Rabbit
Clonality	Polyclonal
Isotype	Rabbit IgG
Clone Names	RB41568
Calculated MW	55784
Antigen Region	468-496

Additional Information

Gene ID	5940
Other Names	RNA-binding motif protein, Y chromosome, family 1 member A1, RNA-binding motif protein 1, RNA-binding motif protein 2, Y chromosome RNA recognition motif 1, hRBM, RBMY1A1, RBM1, RBM2, YRRM1, YRRM2
Target/Specificity	This RBMY1A1 antibody is generated from rabbits immunized with a KLH conjugated synthetic peptide between 468-496 amino acids from the C-terminal region of human RBMY1A1.
Dilution	WB~~1:1000 E~~Use at an assay dependent concentration.
Format	Purified polyclonal antibody supplied in PBS with 0.09% (W/V) sodium azide. This antibody is purified through a protein A column, followed by peptide affinity purification.
Storage	Maintain refrigerated at 2-8°C for up to 2 weeks. For long term storage store at -20°C in small aliquots to prevent freeze-thaw cycles.
Precautions	RBMY1A1 Antibody(C-term) is for research use only and not for use in diagnostic or therapeutic procedures.

Protein Information

Name	RBMY1A1
Synonyms	RBM1, RBM2, YRRM1, YRRM2

Function	RNA-binding protein involved in pre-mRNA splicing. Required for sperm development. Acts additively with TRA2B to promote exon 7 inclusion of the survival motor neuron SMN. Binds non-specifically to mRNAs.
Cellular Location	Nucleus.
Tissue Location	Testis-specific..

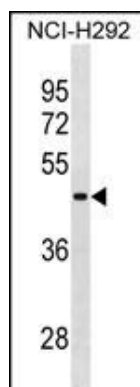
Background

This gene encodes a protein containing an RNA-binding motif in the N-terminus and four SRGY (serine, arginine, glycine, tyrosine) boxes in the C-terminus. Multiple copies of this gene are found in the AZFb azoospermia factor region of chromosome Y and the encoded protein is thought to be involved in spermatogenesis. Most copies of this locus are pseudogenes, although six highly similar copies have full-length ORFs and are considered functional. Four functional copies of this gene are found within inverted repeat IR2; two functional copies of this gene are found in palindrome P3, along with two copies of PTPN13-like, Y-linked. [provided by RefSeq].

References

Dreumont, N., et al. J. Cell. Sci. 123 (PT 1), 40-50 (2010) :
Liu, Y., et al. PLoS Genet. 5 (11), E1000707 (2009) :
Lardone, M.C., et al. Mol. Hum. Reprod. 13(10):705-712(2007)
Skrisovska, L., et al. EMBO Rep. 8(4):372-379(2007)
Lavery, R., et al. Arch. Androl. 53(2):71-73(2007)

Images



RBMY1A1 Antibody (C-term) (Cat. #AP19859b) western blot analysis in NCI-H292 cell line lysates (35ug/lane). This demonstrates the RBMY1A1 antibody detected the RBMY1A1 protein (arrow).

Please note: All products are 'FOR RESEARCH USE ONLY. NOT FOR USE IN DIAGNOSTIC OR THERAPEUTIC PROCEDURES'.