

RPL30 Antibody(N-term)

Affinity Purified Rabbit Polyclonal Antibody (Pab)

Catalog # AP19862a

Product Information

| | |
|-------------------|--|
| Application | WB, E |
| Primary Accession | P62888 |
| Other Accession | P62890 , P62889 , Q76KA2 , P67883 , Q3T0D5 , NP_000980.1 |
| Reactivity | Human, Mouse |
| Predicted | Bovine, Chicken, Monkey, Rat |
| Host | Rabbit |
| Clonality | Polyclonal |
| Isotype | Rabbit IgG |
| Clone Names | RB41571 |
| Calculated MW | 12784 |
| Antigen Region | 1-30 |

Additional Information

| | |
|--------------------|--|
| Gene ID | 6156 |
| Other Names | 60S ribosomal protein L30, RPL30 |
| Target/Specificity | This RPL30 antibody is generated from rabbits immunized with a KLH conjugated synthetic peptide between 1-30 amino acids from the N-terminal region of human RPL30. |
| Dilution | WB~~1:1000 E~~Use at an assay dependent concentration. |
| Format | Purified polyclonal antibody supplied in PBS with 0.09% (W/V) sodium azide. This antibody is purified through a protein A column, followed by peptide affinity purification. |
| Storage | Maintain refrigerated at 2-8°C for up to 2 weeks. For long term storage store at -20°C in small aliquots to prevent freeze-thaw cycles. |
| Precautions | RPL30 Antibody(N-term) is for research use only and not for use in diagnostic or therapeutic procedures. |

Protein Information

| | |
|----------|--|
| Name | RPL30 |
| Function | Component of the large ribosomal subunit (PubMed: 23636399 , PubMed: 32669547). The ribosome is a large ribonucleoprotein complex responsible for the synthesis of proteins in the cell (PubMed: 23636399 , |

Cellular Location

Cytoplasm.

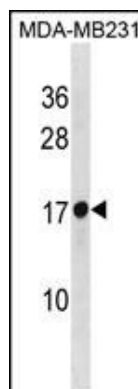
Background

Ribosomes, the organelles that catalyze protein synthesis, consist of a small 40S subunit and a large 60S subunit. Together these subunits are composed of 4 RNA species and approximately 80 structurally distinct proteins. This gene encodes a ribosomal protein that is a component of the 60S subunit. The protein belongs to the L30E family of ribosomal proteins. It is located in the cytoplasm. This gene is co-transcribed with the U72 small nucleolar RNA gene, which is located in its fourth intron. As is typical for genes encoding ribosomal proteins, there are multiple processed pseudogenes of this gene dispersed through the genome. [provided by RefSeq].

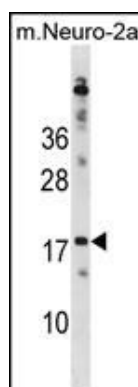
References

Sun, X.X., et al. J. Biol. Chem. 285(33):25812-25821(2010)
Beausoleil, S.A., et al. Nat. Biotechnol. 24(10):1285-1292(2006)
De Bortoli, M., et al. BMC Cancer 6, 223 (2006) :
Bouwmeester, T., et al. Nat. Cell Biol. 6(2):97-105(2004)
Kapp, L.D., et al. Annu. Rev. Biochem. 73, 657-704 (2004) :

Images



RPL30 Antibody (N-term) (Cat. #AP19862a) western blot analysis in MDA-MB231 cell line lysates (35ug/lane). This demonstrates the RPL30 antibody detected the RPL30 protein (arrow).



RPL30 Antibody (N-term) (Cat. #AP19862a) western blot analysis in mouse Neuro-2a cell line lysates (35ug/lane). This demonstrates the RPL30 antibody detected the RPL30 protein (arrow).

Please note: All products are 'FOR RESEARCH USE ONLY. NOT FOR USE IN DIAGNOSTIC OR THERAPEUTIC PROCEDURES'.