

NFE2L3 Antibody(C-term)

Affinity Purified Rabbit Polyclonal Antibody (Pab)

Catalog # AP19864B

Product Information

| | |
|-------------------|-----------------------------|
| Application | WB, E |
| Primary Accession | Q9Y4A8 |
| Other Accession | NP_004280.5 |
| Reactivity | Human |
| Host | Rabbit |
| Clonality | Polyclonal |
| Isotype | Rabbit IgG |
| Clone Names | RB41576 |
| Calculated MW | 76154 |
| Antigen Region | 666-694 |

Additional Information

| | |
|--------------------|--|
| Gene ID | 9603 |
| Other Names | Nuclear factor erythroid 2-related factor 3, NF-E2-related factor 3, NFE2-related factor 3, Nuclear factor, erythroid derived 2, like 3, NFE2L3, NRF3 |
| Target/Specificity | This NFE2L3 antibody is generated from rabbits immunized with a KLH conjugated synthetic peptide between 666-694 amino acids from the C-terminal region of human NFE2L3. |
| Dilution | WB~~1:1000 E~~Use at an assay dependent concentration. |
| Format | Purified polyclonal antibody supplied in PBS with 0.09% (W/V) sodium azide. This antibody is purified through a protein A column, followed by peptide affinity purification. |
| Storage | Maintain refrigerated at 2-8°C for up to 2 weeks. For long term storage store at -20°C in small aliquots to prevent freeze-thaw cycles. |
| Precautions | NFE2L3 Antibody(C-term) is for research use only and not for use in diagnostic or therapeutic procedures. |

Protein Information

| | |
|----------|--------|
| Name | NFE2L3 |
| Synonyms | NRF3 |

| | |
|--------------------------|---|
| Function | Activates erythroid-specific, globin gene expression. |
| Cellular Location | Nucleus {ECO:0000255 PROSITE-ProRule:PRU00978}. |
| Tissue Location | Highly expressed in human placenta and also in B- cell and monocyte cell lines. Low expression in heart, brain, lung, skeletal muscle, kidney and pancreas. |

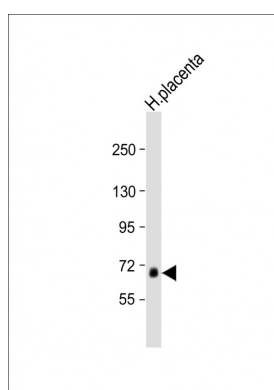
Background

This gene encodes a member of the cap 'n' collar basic-region leucine zipper family of transcription factors. The encoded protein heterodimerizes with small musculoaponeurotic fibrosarcoma factors to bind antioxidant response elements in target genes. This protein is a membrane bound glycoprotein that is targeted to the endoplasmic reticulum and the nuclear envelope. Pseudogenes of this gene are found on chromosomes 16, 17, and 18.

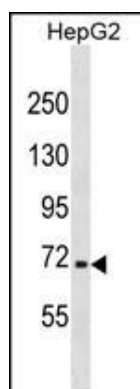
References

Bailey, S.D., et al. Diabetes Care 33(10):2250-2253(2010)
 Rose, J.E., et al. Mol. Med. 16 (7-8), 247-253 (2010) :
 Davila, S., et al. Genes Immun. 11(3):232-238(2010)
 Talmud, P.J., et al. Am. J. Hum. Genet. 85(5):628-642(2009)
 Zhang, Y., et al. J. Biol. Chem. 284(5):3195-3210(2009)

Images



Anti-NFE2L3 Antibody (C-term) at 1:1000 dilution + human placenta lysate Lysates/proteins at 20 µg per lane. Secondary Goat Anti-Rabbit IgG, (H+L), Peroxidase conjugated at 1/10000 dilution. Predicted band size : 76 kDa Blocking/Dilution buffer: 5% NFDM/TBST.



NFE2L3 Antibody (C-term) (Cat. #AP19864b) western blot analysis in HepG2 cell line lysates (35ug/lane). This demonstrates the NFE2L3 antibody detected the NFE2L3 protein (arrow).

Citations

- [NFE2L3 drives hepatocellular carcinoma cell proliferation by regulating the proteasome-dependent degradation of](#)

[ISGylated p53](#)

- [NFE2L3 promotes malignant behavior and EMT of human hepatocellular carcinoma \(HepG2\) cells via Wnt/ \$\beta\$ -catenin pathway](#)
- [ALKBH7 mediates necrosis via rewiring of glyoxal metabolism](#)

Please note: All products are 'FOR RESEARCH USE ONLY. NOT FOR USE IN DIAGNOSTIC OR THERAPEUTIC PROCEDURES'.