

# PRSSL1 Antibody(C-term)

Affinity Purified Rabbit Polyclonal Antibody (Pab)

Catalog # AP19873b

## Product Information

---

<b>Application</b>	WB, FC, IF, E
<b>Primary Accession</b>	<a href="#">Q6UWY2</a>
<b>Other Accession</b>	<a href="#">Q6IE59</a> , <a href="#">Q14B24</a> , <a href="#">NP_999875.1</a>
<b>Reactivity</b>	Human
<b>Predicted</b>	Mouse, Rat
<b>Host</b>	Rabbit
<b>Clonality</b>	Polyclonal
<b>Isotype</b>	Rabbit IgG
<b>Clone Names</b>	RB41617
<b>Calculated MW</b>	30334
<b>Antigen Region</b>	225-254

## Additional Information

---

<b>Gene ID</b>	400668
<b>Other Names</b>	Serine protease 57, 3421-, Serine protease 1-like protein 1, PRSS57, PRSSL1
<b>Target/Specificity</b>	This PRSSL1 antibody is generated from rabbits immunized with a KLH conjugated synthetic peptide between 225-254 amino acids from the C-terminal region of human PRSSL1.
<b>Dilution</b>	WB~~1:1000 FC~~1:25 IF~~1:25 E~~Use at an assay dependent concentration.
<b>Format</b>	Purified polyclonal antibody supplied in PBS with 0.09% (W/V) sodium azide. This antibody is purified through a protein A column, followed by peptide affinity purification.
<b>Storage</b>	Maintain refrigerated at 2-8°C for up to 2 weeks. For long term storage store at -20°C in small aliquots to prevent freeze-thaw cycles.
<b>Precautions</b>	PRSSL1 Antibody(C-term) is for research use only and not for use in diagnostic or therapeutic procedures.

## Protein Information

---

<b>Name</b>	PRSS57
<b>Synonyms</b>	PRSSL1
<b>Function</b>	Serine protease that cleaves preferentially after Arg residues

(PubMed:[22474388](#), PubMed:[23904161](#), PubMed:[25156428](#)). Can also cleave after citrulline (deiminated arginine) and methylarginine residues (PubMed:[25156428](#)).

### Cellular Location

Cytoplasmic granule lumen. Secreted. Note=Stored in cytoplasmic granules and secreted as active enzyme in response to stimulation of neutrophils.

### Tissue Location

Detected in peripheral blood neutrophil granulocytes, but not in other types of leukocytes. Detected in neutrophils and neutrophil precursors in bone marrow (at protein level) (PubMed:[22474388](#), PubMed:[23904161](#)). Detected in myeloblasts and promyelocytes in bone marrow (PubMed:[23904161](#))

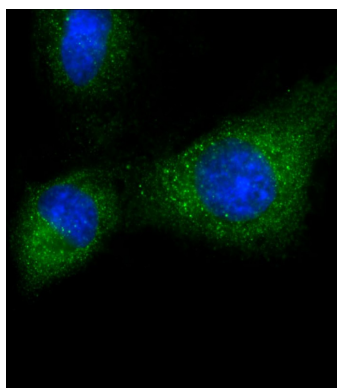
## Background

The function of this protein is unknown.

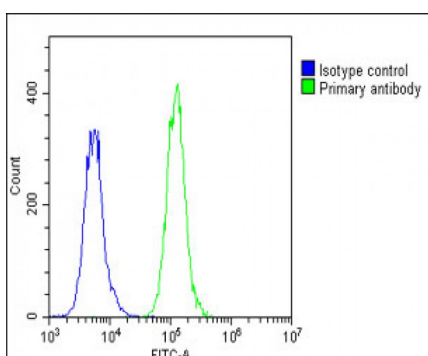
## References

Clark, H.F., et al. Genome Res. 13(10):2265-2270(2003)  
Polikoff, D., et al. Cytogenet. Cell Genet. 79 (1-2), 147-148 (1997) :

## Images

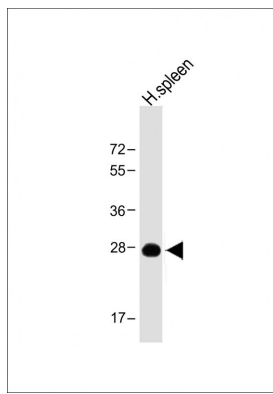


Immunofluorescent analysis of 4% paraformaldehyde-fixed, 0.1% Triton X-100 permeabilized A549 cells labeling PRSS57 with AP19873b at 1/25 dilution, followed by Dylight® 488-conjugated goat anti-Rabbit IgG (OH191631) secondary antibody at 1/200 dilution (green). Immunofluorescence image showing cytoplasm staining on A549 cell line. Cytoplasmic actin is detected with Dylight® 554 Phalloidin (1186255) at 1/500 dilution (red). The nuclear counter stain is DAPI (blue).



Overlay histogram showing A549 cells stained with AP19873b (green line). The cells were fixed with 2% paraformaldehyde (10 min) and then permeabilized with 90% methanol for 10 min. The cells were then incubated in 2% bovine serum albumin to block non-specific protein-protein interactions followed by the antibody (AP19873b, 1:25 dilution) for 60 min at 37°C. The secondary antibody used was Goat-Anti-Rabbit IgG, DyLight® 488 Conjugated Highly Cross-Adsorbed (1583138) at 1/200 dilution for 40 min at 37°C. Isotype control antibody (blue line) was rabbit IgG1 (1 µg/1x10<sup>6</sup> cells) used under the same conditions. Acquisition of >10,000 events was performed.

Anti-PRSSL1 Antibody (C-term) at 1:4000 dilution + Human spleen lysate Lysates/proteins at 20 µg per lane. Secondary Goat Anti-Rabbit IgG, (H+L), Peroxidase conjugated at 1/10000 dilution. Predicted band size : 30 kDa Blocking/Dilution buffer: 5% NFDM/TBST.



Please note: All products are 'FOR RESEARCH USE ONLY. NOT FOR USE IN DIAGNOSTIC OR THERAPEUTIC PROCEDURES'.