

BCL9L Antibody(N-term)

Affinity Purified Rabbit Polyclonal Antibody (Pab)

Catalog # AP19875a

Product Information

Application	WB, E
Primary Accession	Q86UU0
Other Accession	NP_872363.1
Reactivity	Human
Host	Rabbit
Clonality	Polyclonal
Isotype	Rabbit IgG
Clone Names	RB41624
Calculated MW	157129
Antigen Region	147-176

Additional Information

Gene ID	283149
Other Names	B-cell CLL/lymphoma 9-like protein, B-cell lymphoma 9-like protein, BCL9-like protein, Protein BCL9-2, BCL9L, DLNB11
Target/Specificity	This BCL9L antibody is generated from rabbits immunized with a KLH conjugated synthetic peptide between 147-176 amino acids from the N-terminal region of human BCL9L.
Dilution	WB~~1:1000 E~~Use at an assay dependent concentration.
Format	Purified polyclonal antibody supplied in PBS with 0.09% (W/V) sodium azide. This antibody is purified through a protein A column, followed by peptide affinity purification.
Storage	Maintain refrigerated at 2-8°C for up to 2 weeks. For long term storage store at -20°C in small aliquots to prevent freeze-thaw cycles.
Precautions	BCL9L Antibody(N-term) is for research use only and not for use in diagnostic or therapeutic procedures.

Protein Information

Name	BCL9L
Synonyms	DLNB11
Function	Transcriptional regulator that acts as an activator. Promotes beta-catenin

transcriptional activity. Plays a role in tumorigenesis. Enhances the neoplastic transforming activity of CTNNB1 (By similarity).

Cellular Location

Nucleus

Tissue Location

Expressed in breast, ductal and invasive ductal carcinomas of the breast, sporadic colorectal adenomas and carcinomas (at protein level). Expressed in fetal brain. Expressed in lung, amygdala, eye, prostate, pancreatic and prostate cancers, head and neck tumors and embryonal tumor.

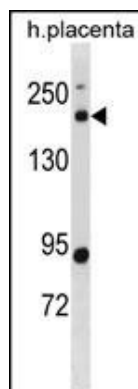
Background

Transcriptional regulator that acts as an activator. Promotes beta-catenin transcriptional activity. Plays a role in tumorigenesis. Enhances the neoplastic transforming activity of CTNNB1 (By similarity).

References

Miller, T.C., et al. J. Mol. Biol. 401(5):969-984(2010)
Fritzmman, J., et al. Gastroenterology 137(1):165-175(2009)
Olsen, J.V., et al. Cell 127(3):635-648(2006)
Sampietro, J., et al. Mol. Cell 24(2):293-300(2006)
Brembeck, F.H., et al. Genes Dev. 18(18):2225-2230(2004)

Images



BCL9L Antibody (N-term) (Cat. #AP19875a) western blot analysis in human placenta tissue lysates (35ug/lane). This demonstrates the BCL9L antibody detected the BCL9L protein (arrow).

Please note: All products are 'FOR RESEARCH USE ONLY. NOT FOR USE IN DIAGNOSTIC OR THERAPEUTIC PROCEDURES'.