

EBAG9 Antibody (Center)

Affinity Purified Rabbit Polyclonal Antibody (Pab)

Catalog # AP19925c

Product Information

Application	WB, E
Primary Accession	O00559
Other Accession	Q9D0V7 , NP_936056.1
Reactivity	Human, Rat, Mouse
Predicted	Mouse
Host	Rabbit
Clonality	Polyclonal
Isotype	Rabbit IgG
Clone Names	RB41813
Calculated MW	24377
Antigen Region	88-117

Additional Information

Gene ID	9166
Other Names	Receptor-binding cancer antigen expressed on SiSo cells, Cancer-associated surface antigen RCAS1, Estrogen receptor-binding fragment-associated gene 9 protein, EBAG9, RCAS1
Target/Specificity	This EBAG9 antibody is generated from rabbits immunized with a KLH conjugated synthetic peptide between 88-117 amino acids from the Central region of human EBAG9.
Dilution	WB~~1:1000 E~~Use at an assay dependent concentration.
Format	Purified polyclonal antibody supplied in PBS with 0.09% (W/V) sodium azide. This antibody is purified through a protein A column, followed by peptide affinity purification.
Storage	Maintain refrigerated at 2-8°C for up to 2 weeks. For long term storage store at -20°C in small aliquots to prevent freeze-thaw cycles.
Precautions	EBAG9 Antibody (Center) is for research use only and not for use in diagnostic or therapeutic procedures.

Protein Information

Name	EBAG9
Synonyms	RCAS1

Function	May participate in suppression of cell proliferation and induces apoptotic cell death through activation of interleukin-1-beta converting enzyme (ICE)-like proteases.
Cellular Location	Golgi apparatus membrane; Single-pass type III membrane protein. Note=According to PubMed:10426319, it also exists as a soluble form which has the same biological activities The existence of such soluble form is however uncertain
Tissue Location	Widely expressed. Expressed in ovary, testis, prostate, thymus, muscle and heart, but not in small intestine, colon, lymph nodes, or peripheral blood lymphocytes. The protein is not detected in any of the above organs

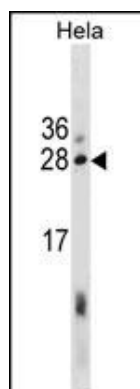
Background

This gene was identified as an estrogen-responsive gene. Regulation of transcription by estrogen is mediated by estrogen receptor which binds to the estrogen-responsive element (ERE) found in the 5'-flanking region of this gene. The encoded protein is a tumor-associated antigen that is expressed at high frequency in a variety of cancers. Two transcript variants differing in the 5' UTR, but encoding the same protein, have been identified for this gene.

References

Wolf, J., et al. FASEB J. 24(10):4000-4019(2010)
Sonoda, K., et al. Exp. Cell Res. 316(11):1795-1803(2010)
Ali-Fehmi, R., et al. Cancer Biomark 6(1):33-48(2010)
Yang, Y.C., et al. Zhonghua Wai Ke Za Zhi 47(13):999-1001(2009)
Adamek, D., et al. Folia Neuropathol 47(3):240-246(2009)

Images



EBAG9 Antibody (Center) (Cat. #AP19925c) western blot analysis in HeLa cell line lysates (35ug/lane). This demonstrates the EBAG9 antibody detected the EBAG9 protein (arrow).

Please note: All products are 'FOR RESEARCH USE ONLY. NOT FOR USE IN DIAGNOSTIC OR THERAPEUTIC PROCEDURES'.