

SERPINB9 Antibody (Center)

Affinity Purified Rabbit Polyclonal Antibody (Pab)

Catalog # AP19931c

Product Information

Application	WB, E
Primary Accession	P50453
Other Accession	NP_004146.1
Reactivity	Human
Host	Rabbit
Clonality	Polyclonal
Isotype	Rabbit IgG
Clone Names	RB41820
Calculated MW	42404
Antigen Region	122-150

Additional Information

Gene ID	5272
Other Names	Serpin B9, Cytoplasmic antiproteinase 3, CAP-3, CAP3, Peptidase inhibitor 9, PI-9, SERPINB9, PI9
Target/Specificity	This SERPINB9 antibody is generated from rabbits immunized with a KLH conjugated synthetic peptide between 122-150 amino acids from the Central region of human SERPINB9.
Dilution	WB~~1:1000 E~~Use at an assay dependent concentration.
Format	Purified polyclonal antibody supplied in PBS with 0.09% (W/V) sodium azide. This antibody is purified through a protein A column, followed by peptide affinity purification.
Storage	Maintain refrigerated at 2-8°C for up to 2 weeks. For long term storage store at -20°C in small aliquots to prevent freeze-thaw cycles.
Precautions	SERPINB9 Antibody (Center) is for research use only and not for use in diagnostic or therapeutic procedures.

Protein Information

Name	SERPINB9
Synonyms	PI9
Function	Granzyme B inhibitor.

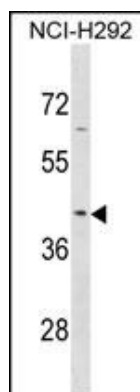
Background

PI9 belongs to the large superfamily of serine proteinase inhibitors (serpins), which bind to and inactivate serine proteinases. These interactions are involved in many cellular processes, including coagulation, fibrinolysis, complement fixation, matrix remodeling, and apoptosis (Sprecher et al., 1995 [PubMed 8530382]).

References

Rousalova, I., et al. Int. J. Oncol. 36(1):275-283(2010)
Jiang, X., et al. Endocrinology 149(11):5366-5373(2008)
Bots, M., et al. Hum. Immunol. 68(12):959-964(2007)
Kummer, J.A., et al. Cell Death Differ. 14(8):1486-1496(2007)
Jiang, X., et al. Oncogene 26(28):4106-4114(2007)

Images



SERPINB9 Antibody (Center) (Cat. #AP19931c) western blot analysis in NCI-H292 cell line lysates (35ug/lane). This demonstrates the SERPINB9 antibody detected the SERPINB9 protein (arrow).

Please note: All products are 'FOR RESEARCH USE ONLY. NOT FOR USE IN DIAGNOSTIC OR THERAPEUTIC PROCEDURES'.