

NLN Antibody (Center)

Affinity Purified Rabbit Polyclonal Antibody (Pab)

Catalog # AP19932c

Product Information

Application	WB, E
Primary Accession	Q9BYT8
Other Accession	NP_065777.1
Reactivity	Human
Host	Rabbit
Clonality	Polyclonal
Isotype	Rabbit IgG
Clone Names	RB41829
Calculated MW	80652
Antigen Region	212-240

Additional Information

Gene ID	57486
Other Names	Neurolysin, mitochondrial, Angiotensin-binding protein, Microsomal endopeptidase, MEP, Mitochondrial oligopeptidase M, Neurotensin endopeptidase, NLN, AGTBP, KIAA1226
Target/Specificity	This NLN antibody is generated from rabbits immunized with a KLH conjugated synthetic peptide between 212-240 amino acids from the Central region of human NLN.
Dilution	WB~~1:1000 E~~Use at an assay dependent concentration.
Format	Purified polyclonal antibody supplied in PBS with 0.09% (W/V) sodium azide. This antibody is purified through a protein A column, followed by peptide affinity purification.
Storage	Maintain refrigerated at 2-8°C for up to 2 weeks. For long term storage store at -20°C in small aliquots to prevent freeze-thaw cycles.
Precautions	NLN Antibody (Center) is for research use only and not for use in diagnostic or therapeutic procedures.

Protein Information

Name	NLN
Synonyms	AGTBP, KIAA1226

Function	Hydrolyzes oligopeptides such as neurotensin, bradykinin and dynorphin A (By similarity). Acts as a regulator of cannabinoid signaling pathway by mediating degradation of hemopressin, an antagonist peptide of the cannabinoid receptor CNR1 (By similarity).
Cellular Location	Mitochondrion intermembrane space {ECO:0000250 UniProtKB:P42676}. Cytoplasm, cytosol {ECO:0000250 UniProtKB:P42676}

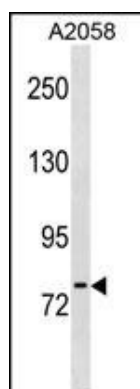
Background

This gene encodes a member of the metallopeptidase M3 protein family that cleaves neurotensin at the Pro10-Tyr11 bond, leading to the formation of neurotensin(1-10) and neurotensin(11-13). The encoded protein is likely involved in the termination of the neurotensinergic signal in the central nervous system and in the gastrointestinal tract.

References

Rose, J. Phd, et al. Mol. Med. (2010) In press :
 Lim, E.J., et al. J. Biol. Chem. 282(13):9722-9732(2007)
 Norman, M.U., et al. Am. J. Physiol. Heart Circ. Physiol. 284 (6), H1978-H1984 (2003) :
 Norman, M.U., et al. Am. J. Physiol. Heart Circ. Physiol. 284 (6), H1978-H1984 (2003) :
 Garrido, P.A., et al. DNA Cell Biol. 18(4):323-331(1999)

Images



NLN Antibody (Center) (Cat. #AP19932c) western blot analysis in A2058 cell line lysates (35ug/lane). This demonstrates the NLN antibody detected the NLN protein (arrow).

Please note: All products are 'FOR RESEARCH USE ONLY. NOT FOR USE IN DIAGNOSTIC OR THERAPEUTIC PROCEDURES'.