

# TIAM1 Antibody (C-term)

Affinity Purified Rabbit Polyclonal Antibody (Pab)

Catalog # AP19942b

## Product Information

---

|                          |  |
|--------------------------|--|
| <b>Application</b>       | WB, E  |
| <b>Primary Accession</b> | <a href="#">Q13009</a>                               |
| <b>Other Accession</b>   | <a href="#">Q60610</a> , <a href="#">NP_003244.2</a> |
| <b>Reactivity</b>        | Human, Rat, Mouse                                    |
| <b>Predicted</b>         | Mouse  |
| <b>Host</b>              | Rabbit   |
| <b>Clonality</b>         | Polyclonal   |
| <b>Isotype</b>           | Rabbit IgG   |
| <b>Clone Names</b>       | RB41848  |
| <b>Calculated MW</b>     | 177508   |
| <b>Antigen Region</b>    | 1478-1506  |

## Additional Information

---

|                           |  |
|---------------------------|--|
| <b>Gene ID</b>            | 7074   |
| <b>Other Names</b>        | T-lymphoma invasion and metastasis-inducing protein 1, TIAM-1, TIAM1   |
| <b>Target/Specificity</b> | This TIAM1 antibody is generated from rabbits immunized with a KLH conjugated synthetic peptide between 1478-1506 amino acids from the C-terminal region of human TIAM1.     |
| <b>Dilution</b>           | WB~~1:1000 E~~Use at an assay dependent concentration.   |
| <b>Format</b>             | Purified polyclonal antibody supplied in PBS with 0.09% (W/V) sodium azide. This antibody is purified through a protein A column, followed by peptide affinity purification. |
| <b>Storage</b>            | Maintain refrigerated at 2-8°C for up to 2 weeks. For long term storage store at -20°C in small aliquots to prevent freeze-thaw cycles.                                      |
| <b>Precautions</b>        | TIAM1 Antibody (C-term) is for research use only and not for use in diagnostic or therapeutic procedures.  |

## Protein Information

---

|                 |   |
|-----------------|---|
| <b>Name</b>     | TIAM1 {ECO:0000303 PubMed:7731688, ECO:0000312 HGNC:HGNC:11805}   |
| <b>Function</b> | Guanyl-nucleotide exchange factor that activates RHO-like proteins and connects extracellular signals to cytoskeletal activities. Activates RAC1, CDC42, and to a lesser extent RHOA and their downstream signaling to regulate |

processes like cell adhesion and cell migration.

#### Cellular Location

Cell junction. Cell membrane; Peripheral membrane protein; Cytoplasmic side. Note=Detected at the boundary between cells with actin-rich protrusions (By similarity). Presence of KRIT1, CDH5 and RAP1B is required for its localization to the cell junction

#### Tissue Location

Found in virtually all analyzed tumor cell lines including B- and T-lymphomas, neuroblastomas, melanomas and carcinomas

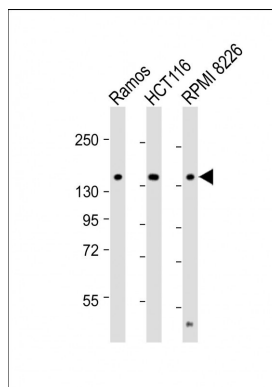
## Background

Modulates the activity of RHO-like proteins and connects extracellular signals to cytoskeletal activities. Acts as a GDP-dissociation stimulator protein that stimulates the GDP-GTP exchange activity of RHO-like GTPases and activates them. Activates RAC1, CDC42, and to a lesser extent RHOA.

## References

Yang, W., et al. Jpn. J. Clin. Oncol. 40(11):1053-1059(2010)  
Moriarty, C.H., et al. J. Biol. Chem. 285(27):20541-20546(2010)  
Rose, J.E., et al. Mol. Med. 16 (7-8), 247-253 (2010) :  
Rajagopal, S., et al. J. Biol. Chem. 285(23):18060-18071(2010)  
Shepherd, T.R., et al. J. Mol. Biol. 398(5):730-746(2010)

## Images



All lanes : Anti-TIAM1 Antibody (C-term) at 1:2000 dilution  
Lane 1: Ramos whole cell lysate Lane 2: HCT116 whole cell lysate Lane 3: RPMI 8226 whole cell lysate  
Lysates/proteins at 20 µg per lane. Secondary Goat Anti-Rabbit IgG, (H+L), Peroxidase conjugated at 1/10000 dilution. Predicted band size : 178 kDa Blocking/Dilution buffer: 5% NFDM/TBST.

Please note: All products are 'FOR RESEARCH USE ONLY. NOT FOR USE IN DIAGNOSTIC OR THERAPEUTIC PROCEDURES'.