

MRPL45 Antibody (C-term)

Affinity Purified Rabbit Polyclonal Antibody (Pab)

Catalog # AP20000b

Product Information

Application	WB, E
Primary Accession	Q9BRJ2
Other Accession	Q9D0Q7
Reactivity	Human
Predicted	Mouse
Host	Rabbit
Clonality	Polyclonal
Isotype	Rabbit IgG
Clone Names	RB42000
Calculated MW	35351
Antigen Region	218-245

Additional Information

Other Names	39S ribosomal protein L45, mitochondrial, L45mt, MRP-L45, MRPL45
Target/Specificity	This MRPL45 antibody is generated from rabbits immunized with a KLH conjugated synthetic peptide between 218-245 amino acids from the C-terminal region of human MRPL45.
Dilution	WB~~1:1000 E~~Use at an assay dependent concentration.
Format	Purified polyclonal antibody supplied in PBS with 0.09% (W/V) sodium azide. This antibody is purified through a protein A column, followed by peptide affinity purification.
Storage	Maintain refrigerated at 2-8°C for up to 2 weeks. For long term storage store at -20°C in small aliquots to prevent freeze-thaw cycles.
Precautions	MRPL45 Antibody (C-term) is for research use only and not for use in diagnostic or therapeutic procedures.

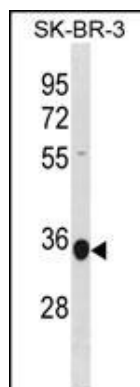
Protein Information

Name	MRPL45 (HGNC:16651)
Function	Component of the mitochondrial large ribosomal subunit (mt- LSU) (PubMed: 25278503 , PubMed: 25838379 , PubMed: 28892042 , PubMed: 33602856 , PubMed: 35177605). Within the mitochondrial ribosomes, required to direct the nascent polypeptide toward the tunnel exit and position the exit at a distance from the membrane surface (PubMed: 33602856).

Background

The function of this protein is unknown.

Images



MRPL45 Antibody (C-term) (Cat. #AP20000b) western blot analysis in SK-BR-3 cell line lysates (35ug/lane). This demonstrates the MRPL45 antibody detected the MRPL45 protein (arrow).

Please note: All products are 'FOR RESEARCH USE ONLY. NOT FOR USE IN DIAGNOSTIC OR THERAPEUTIC PROCEDURES'.