

TTBK1 Antibody (Center)

Affinity Purified Rabbit Polyclonal Antibody (Pab)

Catalog # AP20009c

Product Information

Application	WB, E
Primary Accession	Q5TCY1
Other Accession	NP_115927.1
Reactivity	Human
Host	Rabbit
Clonality	Polyclonal
Isotype	Rabbit IgG
Clone Names	RB42064
Calculated MW	142737
Antigen Region	667-695

Additional Information

Gene ID	84630
Other Names	Tau-tubulin kinase 1, Brain-derived tau kinase, TTBK1, BDTK, KIAA1855
Target/Specificity	This TTBK1 antibody is generated from rabbits immunized with a KLH conjugated synthetic peptide between 667-695 amino acids from the Central region of human TTBK1.
Dilution	WB~~1:1000 E~~Use at an assay dependent concentration.
Format	Purified polyclonal antibody supplied in PBS with 0.09% (W/V) sodium azide. This antibody is purified through a protein A column, followed by peptide affinity purification.
Storage	Maintain refrigerated at 2-8°C for up to 2 weeks. For long term storage store at -20°C in small aliquots to prevent freeze-thaw cycles.
Precautions	TTBK1 Antibody (Center) is for research use only and not for use in diagnostic or therapeutic procedures.

Protein Information

Name	TTBK1
Synonyms	BDTK, KIAA1855
Function	Serine/threonine kinase which is able to phosphorylate TAU on serine, threonine and tyrosine residues. Induces aggregation of TAU.

Cellular Location	Cytoplasm.
Tissue Location	Expressed in the brain, particularly in cortical and hippocampal neurons. Weakly expressed in spinal cord and testis. No expression in adipose tissue, bladder, cervix, colon, esophagus, heart, kidney, liver, lung, ovary, placenta, prostate, skeletal muscle, small intestine, spleen, testis, thymus, thyroid or trachea

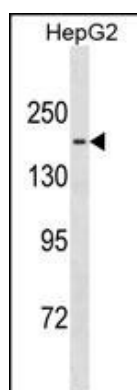
Background

Serine/threonine kinase which is able to phosphorylate TAU on serine, threonine and tyrosine residues. Induces aggregation of TAU.

References

Vazquez-Higuera, J.L., et al. Neurobiol. Aging (2010) In press :
Sato, S., et al. J. Neurosci. 28(53):14511-14521(2008)
Ewing, R.M., et al. Mol. Syst. Biol. 3, 89 (2007) :
Mungall, A.J., et al. Nature 425(6960):805-811(2003)
Takahashi, M., et al. FEBS Lett. 372(1):59-64(1995)

Images



TTBK1 Antibody (Center) (Cat. #AP20009c) western blot analysis in HepG2 cell line lysates (35ug/lane). This demonstrates the TTBK1 antibody detected the TTBK1 protein (arrow).

Please note: All products are 'FOR RESEARCH USE ONLY. NOT FOR USE IN DIAGNOSTIC OR THERAPEUTIC PROCEDURES'.