

# PCOLCE2 Antibody (Center)

Affinity Purified Rabbit Polyclonal Antibody (Pab)

Catalog # AP20049c

## Product Information

---

<b>Application</b>	WB, E
<b>Primary Accession</b>	<a href="#">Q9UKZ9</a>
<b>Other Accession</b>	<a href="#">NP_037495.1</a>
<b>Reactivity</b>	Human, Mouse
<b>Host</b>	Rabbit
<b>Clonality</b>	Polyclonal
<b>Isotype</b>	Rabbit IgG
<b>Clone Names</b>	RB42227
<b>Calculated MW</b>	45717
<b>Antigen Region</b>	201-230

## Additional Information

---

<b>Gene ID</b>	26577
<b>Other Names</b>	Procollagen C-endopeptidase enhancer 2, Procollagen COOH-terminal proteinase enhancer 2, PCPE-2, Procollagen C-proteinase enhancer 2, PCOLCE2, PCPE2
<b>Target/Specificity</b>	This PCOLCE2 antibody is generated from rabbits immunized with a KLH conjugated synthetic peptide between 201-230 amino acids from the Central region of human PCOLCE2.
<b>Dilution</b>	WB~~1:1000 E~~Use at an assay dependent concentration.
<b>Format</b>	Purified polyclonal antibody supplied in PBS with 0.09% (W/V) sodium azide. This antibody is purified through a protein A column, followed by peptide affinity purification.
<b>Storage</b>	Maintain refrigerated at 2-8°C for up to 2 weeks. For long term storage store at -20°C in small aliquots to prevent freeze-thaw cycles.
<b>Precautions</b>	PCOLCE2 Antibody (Center) is for research use only and not for use in diagnostic or therapeutic procedures.

## Protein Information

---

<b>Name</b>	PCOLCE2
<b>Synonyms</b>	PCPE2

<b>Function</b>	Binds to the C-terminal propeptide of types I and II procollagens and may enhance the cleavage of that propeptide by BMP1.
<b>Cellular Location</b>	Secreted.
<b>Tissue Location</b>	Highly expressed in the heart, trabecular meshwork, pituitary gland, bladder, mammary gland, trachea and placenta and weakly expressed in the brain. Expressed in cartilage

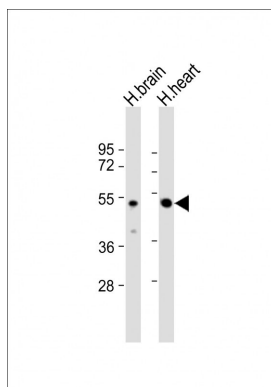
## Background

PCOLCE2 binds to the C-terminal propeptide of types I and II procollagens and may enhance the cleavage of that propeptide by BMP1.

## References

Zhu, J., et al. J. Lipid Res. 50(7):1330-1339(2009)  
Steiglitz, B.M., et al. J. Biol. Chem. 277(51):49820-49830(2002)  
Steiglitz, B.M., et al. Cytogenet. Cell Genet. 95 (3-4), 244-245 (2001) :  
Xu, H., et al. Genomics 66(3):264-273(2000)

## Images



All lanes : Anti-PCOLCE2 Antibody (Center) at 1:2000 dilution  
Lane 1: human brain lysate  
Lane 2: human heart lysate  
Lysates/proteins at 20 µg per lane.  
Secondary Goat Anti-Rabbit IgG, (H+L), Peroxidase conjugated at 1/10000 dilution.  
Predicted band size : 46 kDa  
Blocking/Dilution buffer: 5% NFDM/TBST.

Please note: All products are 'FOR RESEARCH USE ONLY. NOT FOR USE IN DIAGNOSTIC OR THERAPEUTIC PROCEDURES'.