

NHLRC3 Antibody (C-term)

Affinity Purified Rabbit Polyclonal Antibody (Pab)

Catalog # AP20054b

Product Information

Application	WB, E
Primary Accession	Q5JS37
Other Accession	NP_001017370.1
Reactivity	Human
Host	Rabbit
Clonality	Polyclonal
Isotype	Rabbit IgG
Clone Names	RB42319
Calculated MW	38283
Antigen Region	216-245

Additional Information

Gene ID	387921
Other Names	NHL repeat-containing protein 3, NHLRC3
Target/Specificity	This NHLRC3 antibody is generated from rabbits immunized with a KLH conjugated synthetic peptide between 216-245 amino acids from the C-terminal region of human NHLRC3.
Dilution	WB~~1:1000 E~~Use at an assay dependent concentration.
Format	Purified polyclonal antibody supplied in PBS with 0.09% (W/V) sodium azide. This antibody is purified through a protein A column, followed by peptide affinity purification.
Storage	Maintain refrigerated at 2-8°C for up to 2 weeks. For long term storage store at -20°C in small aliquots to prevent freeze-thaw cycles.
Precautions	NHLRC3 Antibody (C-term) is for research use only and not for use in diagnostic or therapeutic procedures.

Protein Information

Name	NHLRC3
Cellular Location	Secreted.

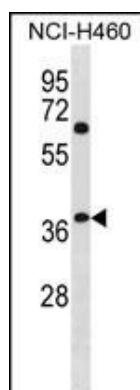
Background

The function of this protein is unknown.

References

Strausberg, R.L., et al. Proc. Natl. Acad. Sci. U.S.A. 99(26):16899-16903(2002)

Images



NHLRC3 Antibody (C-term) (Cat. #AP20054b) western blot analysis in NCI-H460 cell line lysates (35ug/lane). This demonstrates the NHLRC3 antibody detected the NHLRC3 protein (arrow).

Please note: All products are 'FOR RESEARCH USE ONLY. NOT FOR USE IN DIAGNOSTIC OR THERAPEUTIC PROCEDURES'.