

LANCL3 Antibody (C-term)

Affinity Purified Rabbit Polyclonal Antibody (Pab)

Catalog # AP20055b

Product Information

Application	WB, E
Primary Accession	Q6ZV70
Other Accession	Q8CD19 , NP_940913.1
Reactivity	Human
Predicted	Mouse
Host	Rabbit
Clonality	Polyclonal
Isotype	Rabbit IgG
Clone Names	RB42322
Calculated MW	46319
Antigen Region	262-290

Additional Information

Gene ID	347404
Other Names	LanC-like protein 3, LANCL3
Target/Specificity	This LANCL3 antibody is generated from rabbits immunized with a KLH conjugated synthetic peptide between 262-290 amino acids from the C-terminal region of human LANCL3.
Dilution	WB~~1:1000 E~~Use at an assay dependent concentration.
Format	Purified polyclonal antibody supplied in PBS with 0.09% (W/V) sodium azide. This antibody is purified through a protein A column, followed by peptide affinity purification.
Storage	Maintain refrigerated at 2-8°C for up to 2 weeks. For long term storage store at -20°C in small aliquots to prevent freeze-thaw cycles.
Precautions	LANCL3 Antibody (C-term) is for research use only and not for use in diagnostic or therapeutic procedures.

Protein Information

Name	LANCL3
------	--------

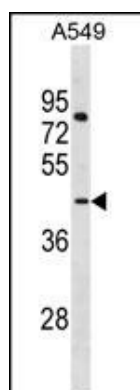
Background

The function of this protein is unknown.

References

Gubin, A.N., et al. Genomics 59(2):168-177(1999)

Images



LANCL3 Antibody (C-term) (Cat. #AP20055b) western blot analysis in MDA-MB453 cell line lysates (35ug/lane). This demonstrates the LANCL3 antibody detected the LANCL3 protein (arrow).

Please note: All products are 'FOR RESEARCH USE ONLY. NOT FOR USE IN DIAGNOSTIC OR THERAPEUTIC PROCEDURES'.