

UCHL5 Antibody (Center)

Affinity Purified Rabbit Polyclonal Antibody (Pab)

Catalog # AP20058c

Product Information

Application	WB, E
Primary Accession	Q9Y5K5
Other Accession	NP_057068.1
Reactivity	Human
Host	Rabbit
Clonality	Polyclonal
Isotype	Rabbit IgG
Clone Names	RB42329
Calculated MW	37607
Antigen Region	136-164

Additional Information

Gene ID	51377
Other Names	Ubiquitin carboxyl-terminal hydrolase isozyme L5, UCH-L5, Ubiquitin C-terminal hydrolase UCH37, Ubiquitin thioesterase L5, UCHL5, UCH37
Target/Specificity	This UCHL5 antibody is generated from rabbits immunized with a KLH conjugated synthetic peptide between 136-164 amino acids from the Central region of human UCHL5.
Dilution	WB~~1:1000 E~~Use at an assay dependent concentration.
Format	Purified polyclonal antibody supplied in PBS with 0.09% (W/V) sodium azide. This antibody is purified through a protein A column, followed by peptide affinity purification.
Storage	Maintain refrigerated at 2-8°C for up to 2 weeks. For long term storage store at -20°C in small aliquots to prevent freeze-thaw cycles.
Precautions	UCHL5 Antibody (Center) is for research use only and not for use in diagnostic or therapeutic procedures.

Protein Information

Name	UCHL5
Synonyms	UCH37
Function	Protease that specifically cleaves 'Lys-48'-linked polyubiquitin chains.

Deubiquitinating enzyme associated with the 19S regulatory subunit of the 26S proteasome. Putative regulatory component of the INO80 complex; however is inactive in the INO80 complex and is activated by a transient interaction of the INO80 complex with the proteasome via ADRM1.

Cellular Location

Cytoplasm. Nucleus. Note=Associates with the proteasome 19S subunit in the cytoplasm. Associates with the INO80 complex in the nucleus

Background

Protease that specifically cleaves 'Lys-48'-linked polyubiquitin chains. Deubiquitinating enzyme associated with the 19S regulatory subunit of the 26S proteasome.

References

Nishio, K., et al. Biochem. Biophys. Res. Commun. 390(3):855-860(2009)

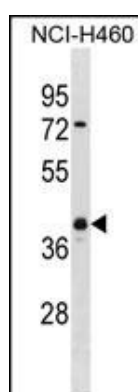
Yao, T., et al. Mol. Cell 31(6):909-917(2008)

Koulich, E., et al. Mol. Biol. Cell 19(3):1072-1082(2008)

Qiu, X.B., et al. EMBO J. 25(24):5742-5753(2006)

Hamazaki, J., et al. EMBO J. 25(19):4524-4536(2006)

Images



UCHL5 Antibody (Center) (Cat. #AP20058c) western blot analysis in NCI-H460 cell line lysates (35ug/lane). This demonstrates the UCHL5 antibody detected the UCHL5 protein (arrow).

Please note: All products are 'FOR RESEARCH USE ONLY. NOT FOR USE IN DIAGNOSTIC OR THERAPEUTIC PROCEDURES'.