

SERPINB8 Antibody (C-term)

Affinity Purified Rabbit Polyclonal Antibody (Pab)

Catalog # AP20066b

Product Information

Application	WB, E
Primary Accession	P50452
Other Accession	NP_002631.3
Reactivity	Human
Host	Rabbit
Clonality	Polyclonal
Isotype	Rabbit IgG
Clone Names	RB42352
Calculated MW	42767
Antigen Region	274-301

Additional Information

Gene ID	5271
Other Names	Serpin B8, Cytoplasmic antiproteinase 2, CAP-2, CAP2, Peptidase inhibitor 8, PI-8, SERPINB8, PI8
Target/Specificity	This SERPINB8 antibody is generated from rabbits immunized with a KLH conjugated synthetic peptide between 274-301 amino acids from the C-terminal region of human SERPINB8.
Dilution	WB~~1:1000 E~~Use at an assay dependent concentration.
Format	Purified polyclonal antibody supplied in PBS with 0.09% (W/V) sodium azide. This antibody is purified through a protein A column, followed by peptide affinity purification.
Storage	Maintain refrigerated at 2-8°C for up to 2 weeks. For long term storage store at -20°C in small aliquots to prevent freeze-thaw cycles.
Precautions	SERPINB8 Antibody (C-term) is for research use only and not for use in diagnostic or therapeutic procedures.

Protein Information

Name	SERPINB8
Synonyms	PI8
Function	Has an important role in epithelial desmosome-mediated cell- cell adhesion.

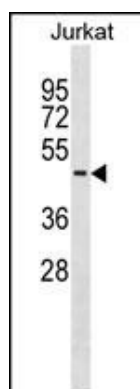
Background

The superfamily of high molecular weight serine proteinase inhibitors (serpins) regulate a diverse set of intracellular and extracellular processes such as complement activation, fibrinolysis, coagulation, cellular differentiation, tumor suppression, apoptosis, and cell migration. Serpins are characterized by well-conserved a tertiary structure that consists of 3 beta sheets and 8 or 9 alpha helices (Huber and Carrell, 1989 [PubMed 2690952]). A critical portion of the molecule, the reactive center loop connects beta sheets A and C. Protease inhibitor-8 (PI8; SERPINB8) is a member of the ov-serpin subfamily, which, relative to the archetypal serpin PI1 (MIM 107400), is characterized by a high degree of homology to chicken ovalbumin, lack of N- and C-terminal extensions, absence of a signal peptide, and a serine rather than an asparagine residue at the penultimate position (summary by Bartuski et al., 1997 [PubMed 9268635]).

References

Rose, J.E., et al. Mol. Med. 16 (7-8), 247-253 (2010) :
de Koning, P.J., et al. Pancreas 38(4):461-467(2009)
Luke, M.M., et al. Stroke 40(2):363-368(2009)
Shiffman, D., et al. Arterioscler. Thromb. Vasc. Biol. 28(1):173-179(2008)
Denoeud, F., et al. Genome Res. 17(6):746-759(2007)

Images



SERPINB8 Antibody (C-term) (Cat. #AP20066b) western blot analysis in Jurkat cell line lysates (35ug/lane). This demonstrates the SERPINB8 antibody detected the SERPINB8 protein (arrow).

Please note: All products are 'FOR RESEARCH USE ONLY. NOT FOR USE IN DIAGNOSTIC OR THERAPEUTIC PROCEDURES'.