

## DEPDC7 Antibody (C-term)

Affinity Purified Rabbit Polyclonal Antibody (Pab)

Catalog # AP20068b

### Product Information

---

Application	WB, E
Primary Accession	<a href="#">Q96QD5</a>
Other Accession	<a href="#">NP_631899.2</a>
Reactivity	Human
Host	Rabbit
Clonality	Polyclonal
Isotype	Rabbit IgG
Clone Names	RB42357
Calculated MW	58310
Antigen Region	439-467

### Additional Information

---

Gene ID	91614
Other Names	DEP domain-containing protein 7, Protein TR2/D15, DEPDC7
Target/Specificity	This DEPDC7 antibody is generated from rabbits immunized with a KLH conjugated synthetic peptide between 439-467 amino acids from the C-terminal region of human DEPDC7.
Dilution	WB~~1:1000 E~~Use at an assay dependent concentration.
Format	Purified polyclonal antibody supplied in PBS with 0.09% (W/V) sodium azide. This antibody is purified through a protein A column, followed by peptide affinity purification.
Storage	Maintain refrigerated at 2-8°C for up to 2 weeks. For long term storage store at -20°C in small aliquots to prevent freeze-thaw cycles.
Precautions	DEPDC7 Antibody (C-term) is for research use only and not for use in diagnostic or therapeutic procedures.

### Protein Information

---

Name	DEPDC7
Tissue Location	Expressed in liver..

### Background

---

The function of this protein is unknown.

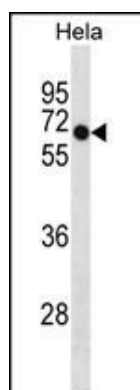
## References

---

Gawin, B., et al. Genome Res. 9(11):1074-1086(1999)

## Images

---



DEPDC7 Antibody (C-term) (Cat. #AP20068b) western blot analysis in HeLa cell line lysates (35ug/lane). This demonstrates the DEPDC7 antibody detected the DEPDC7 protein (arrow).

Please note: All products are 'FOR RESEARCH USE ONLY. NOT FOR USE IN DIAGNOSTIC OR THERAPEUTIC PROCEDURES'.