

RRM1 Antibody (N-term)

Affinity Purified Rabbit Polyclonal Antibody (Pab)

Catalog # AP20081a

Product Information

Application	WB, E
Primary Accession	P23921
Other Accession	P07742 , NP_001024.1
Reactivity	Human
Predicted	Mouse
Host	Rabbit
Clonality	Polyclonal
Isotype	Rabbit IgG
Clone Names	RB42407
Calculated MW	90070
Antigen Region	71-100

Additional Information

Gene ID	6240
Other Names	Ribonucleoside-diphosphate reductase large subunit, Ribonucleoside-diphosphate reductase subunit M1, Ribonucleotide reductase large subunit, RRM1, RR1
Target/Specificity	This RRM1 antibody is generated from rabbits immunized with a KLH conjugated synthetic peptide between 71-100 amino acids from the N-terminal region of human RRM1.
Dilution	WB~~1:1000 E~~Use at an assay dependent concentration.
Format	Purified polyclonal antibody supplied in PBS with 0.09% (W/V) sodium azide. This antibody is purified through a protein A column, followed by peptide affinity purification.
Storage	Maintain refrigerated at 2-8°C for up to 2 weeks. For long term storage store at -20°C in small aliquots to prevent freeze-thaw cycles.
Precautions	RRM1 Antibody (N-term) is for research use only and not for use in diagnostic or therapeutic procedures.

Protein Information

Name	RRM1
Synonyms	RR1

Function	Provides the precursors necessary for DNA synthesis. Catalyzes the biosynthesis of deoxyribonucleotides from the corresponding ribonucleotides.
Cellular Location	Cytoplasm.

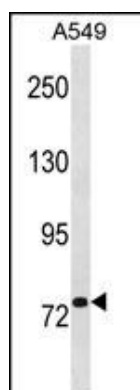
Background

This gene encodes one of two non-identical subunits that constitute ribonucleoside-diphosphate reductase, an enzyme essential for the production of deoxyribonucleotides prior to DNA synthesis in S phase of dividing cells. It is one of several genes located in the imprinted gene domain of 11p15.5, an important tumor-suppressor gene region. Alterations in this region have been associated with the Beckwith-Wiedemann syndrome, Wilms tumor, rhabdomyosarcoma, adrenocortical carcinoma, and lung, ovarian, and breast cancer. This gene may play a role in malignancies and disease that involve this region.

References

Ucisik-Akkaya, E., et al. Mol. Hum. Reprod. 16(10):770-777(2010)
Liu, C.Y., et al. Carcinogenesis 31(7):1259-1263(2010)
Vinolas, N., et al. Lung Cancer (2010) In press :
Niida, H., et al. Genes Dev. 24(4):333-338(2010)
Dong, S., et al. J Hematol Oncol 3, 10 (2010) :

Images



RRM1 Antibody (N-term) (Cat. #AP20081a) western blot analysis in A549 cell line lysates (35ug/lane). This demonstrates the RRM1 antibody detected the RRM1 protein (arrow).

Please note: All products are 'FOR RESEARCH USE ONLY. NOT FOR USE IN DIAGNOSTIC OR THERAPEUTIC PROCEDURES'.