

HSPA1L Antibody (C-term)

Affinity Purified Rabbit Polyclonal Antibody (Pab)

Catalog # AP20091b

Product Information

Application	WB, E
Primary Accession	Q53FA3
Reactivity	Human
Host	Rabbit
Clonality	Polyclonal
Isotype	Rabbit IgG
Clone Names	RB42434
Calculated MW	70404
Antigen Region	576-603

Additional Information

Other Names	Heat shock 70 kDa protein 1-like;
Target/Specificity	This HSPA1L antibody is generated from rabbits immunized with a KLH conjugated synthetic peptide between 576-603 amino acids from the C-terminal region of human HSPA1L.
Dilution	WB~~1:1000 E~~Use at an assay dependent concentration.
Format	Purified polyclonal antibody supplied in PBS with 0.09% (W/V) sodium azide. This antibody is purified through a protein A column, followed by peptide affinity purification.
Storage	Maintain refrigerated at 2-8°C for up to 2 weeks. For long term storage store at -20°C in small aliquots to prevent freeze-thaw cycles.
Precautions	HSPA1L Antibody (C-term) is for research use only and not for use in diagnostic or therapeutic procedures.

Protein Information

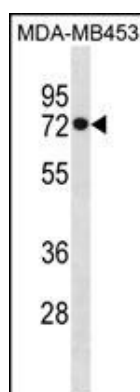
Name	HSPA1L {ECO:0000313 Ensembl:ENSP00000409151.2}
------	--

Background

In cooperation with other chaperones, Hsp70s stabilize preexistent proteins against aggregation and mediate the folding of newly translated polypeptides in the cytosol as well as within organelles. These chaperones participate in all these processes through their ability to recognize nonnative conformations of other proteins. They bind extended peptide segments with a net hydrophobic character exposed by

polypeptides during translation and membrane translocation, or following stress-induced damage.

Images



HSPA1L Antibody (C-term) (Cat. #AP20091b) western blot analysis in MDA-MB453 cell line lysates (35ug/lane). This demonstrates the HSPA1L antibody detected the HSPA1L protein (arrow).

Please note: All products are 'FOR RESEARCH USE ONLY. NOT FOR USE IN DIAGNOSTIC OR THERAPEUTIC PROCEDURES'.