

# HTATSF1 Antibody (C-term)

Affinity Purified Rabbit Polyclonal Antibody (Pab)

Catalog # AP20095b

## Product Information

---

Application	WB, E
Primary Accession	<a href="#">Q5H919</a>
Other Accession	<a href="#">O43719</a>
Reactivity	Human
Host	Rabbit
Clonality	Polyclonal
Isotype	Rabbit IgG
Clone Names	RB42443
Calculated MW	25185
Antigen Region	152-179

## Additional Information

---

Other Names	HIV Tat-specific factor 1;HIV-1 Tat specific factor 1
Target/Specificity	This HTATSF1 antibody is generated from rabbits immunized with a KLH conjugated synthetic peptide between 152-179 amino acids from the C-terminal region of human HTATSF1.
Dilution	WB~~1:1000 E~~Use at an assay dependent concentration.
Format	Purified polyclonal antibody supplied in PBS with 0.09% (W/V) sodium azide. This antibody is purified through a protein A column, followed by peptide affinity purification.
Storage	Maintain refrigerated at 2-8°C for up to 2 weeks. For long term storage store at -20°C in small aliquots to prevent freeze-thaw cycles.
Precautions	HTATSF1 Antibody (C-term) is for research use only and not for use in diagnostic or therapeutic procedures.

## Protein Information

---

Name	HTATSF1 {ECO:0000313 Ensembl:ENSP00000412420.1}
------	---

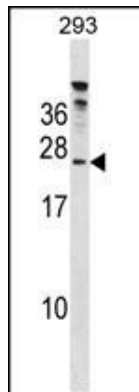
## Background

---

The function of this protein is unknown.

## Images

---



HTATSF1 Antibody (C-term) (Cat. #AP20095b) western blot analysis in 293 cell line lysates (35ug/lane). This demonstrates the HTATSF1 antibody detected the HTATSF1 protein (arrow).

Please note: All products are 'FOR RESEARCH USE ONLY. NOT FOR USE IN DIAGNOSTIC OR THERAPEUTIC PROCEDURES'.