

GLUD2 Antibody (N-term)

Affinity Purified Rabbit Polyclonal Antibody (Pab)

Catalog # AP20104a

Product Information

Application	WB, E
Primary Accession	P49448
Other Accession	NP_036216.2
Reactivity	Human
Host	Rabbit
Clonality	Polyclonal
Isotype	Rabbit IgG
Clone Names	RB42527
Calculated MW	61434
Antigen Region	75-103

Additional Information

Gene ID	2747
Other Names	Glutamate dehydrogenase 2, mitochondrial, GDH 2, GLUD2, GLUDP1
Target/Specificity	This GLUD2 antibody is generated from rabbits immunized with a KLH conjugated synthetic peptide between 75-103 amino acids from the N-terminal region of human GLUD2.
Dilution	WB~~1:1000 E~~Use at an assay dependent concentration.
Format	Purified polyclonal antibody supplied in PBS with 0.09% (W/V) sodium azide. This antibody is purified through a protein A column, followed by peptide affinity purification.
Storage	Maintain refrigerated at 2-8°C for up to 2 weeks. For long term storage store at -20°C in small aliquots to prevent freeze-thaw cycles.
Precautions	GLUD2 Antibody (N-term) is for research use only and not for use in diagnostic or therapeutic procedures.

Protein Information

Name	GLUD2
Synonyms	GLUDP1
Function	Important for recycling the chief excitatory neurotransmitter, glutamate, during neurotransmission.

Cellular Location	Mitochondrion matrix
Tissue Location	Expressed in retina, testis and, at a lower level, brain

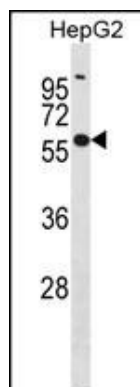
Background

The protein encoded by this gene is localized to the mitochondrion and acts as a homohexamer to recycle glutamate during neurotransmission. The encoded enzyme catalyzes the reversible oxidative deamination of glutamate to alpha-ketoglutarate. This gene is intronless.

References

Spanaki, C., et al. J. Biol. Chem. 285(22):16748-16756(2010)
 Plaitakis, A., et al. Eur. J. Hum. Genet. 18(3):336-341(2010)
 Zaganas, I., et al. Neurochem. Int. 55 (1-3), 52-63 (2009) :
 Mastorodemos, V., et al. Biochem. Cell Biol. 87(3):505-516(2009)
 Kanavouras, K., et al. J. Neurochem. 109 SUPPL 1, 167-173 (2009) :

Images



GLUD2 Antibody (N-term) (Cat. #AP20104a) western blot analysis in HepG2 cell line lysates (35ug/lane). This demonstrates the GLUD2 antibody detected the GLUD2 protein (arrow).

Please note: All products are 'FOR RESEARCH USE ONLY. NOT FOR USE IN DIAGNOSTIC OR THERAPEUTIC PROCEDURES'.