

POLDIP3 Antibody (N-term)

Affinity Purified Rabbit Polyclonal Antibody (Pab)

Catalog # AP20109a

Product Information

Application	WB, IF, IHC-P, E
Primary Accession	Q9BY77
Other Accession	Q8BG81 , NP_115687.2
Reactivity	Human, Mouse
Predicted	Mouse
Host	Rabbit
Clonality	Polyclonal
Isotype	Rabbit IgG
Calculated MW	46089
Antigen Region	93-120

Additional Information

Gene ID	84271
Other Names	Polymerase delta-interacting protein 3, 46 kDa DNA polymerase delta interaction protein, p46, S6K1 Aly/REF-like target, SKAR, POLDIP3, KIAA1649, PDIP46
Target/Specificity	This POLDIP3 antibody is generated from rabbits immunized with a KLH conjugated synthetic peptide between 93-120 amino acids from the N-terminal region of human POLDIP3.
Dilution	WB~~1:1000 IF~~1:25 IHC-P~~1:100~500 E~~Use at an assay dependent concentration.
Format	Purified polyclonal antibody supplied in PBS with 0.09% (W/V) sodium azide. This antibody is purified through a protein A column, followed by peptide affinity purification.
Storage	Maintain refrigerated at 2-8°C for up to 2 weeks. For long term storage store at -20°C in small aliquots to prevent freeze-thaw cycles.
Precautions	POLDIP3 Antibody (N-term) is for research use only and not for use in diagnostic or therapeutic procedures.

Protein Information

Name	POLDIP3
Synonyms	KIAA1649, PDIP46

Function	Is involved in regulation of translation. Is preferentially associated with CBC-bound spliced mRNA-protein complexes during the pioneer round of mRNA translation. Contributes to enhanced translational efficiency of spliced over nonspliced mRNAs. Recruits activated ribosomal protein S6 kinase beta-1 I/RPS6KB1 to newly synthesized mRNA. Involved in nuclear mRNA export; probably mediated by association with the TREX complex.
Cellular Location	Nucleus. Nucleus speckle. Cytoplasm. Note=Nucleocytoplasmic shuttling protein

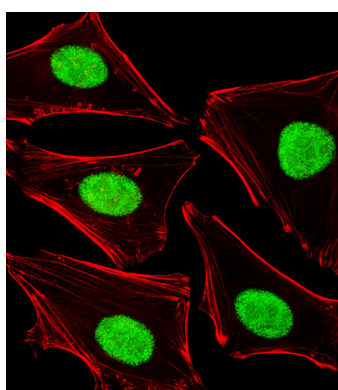
Background

This gene encodes a protein that interacts with the DNA polymerase delta p50 subunit. This protein is a specific target of S6 kinase 1 and regulates cell growth. Two transcript variants that encode different protein isoforms have been identified. [provided by RefSeq].

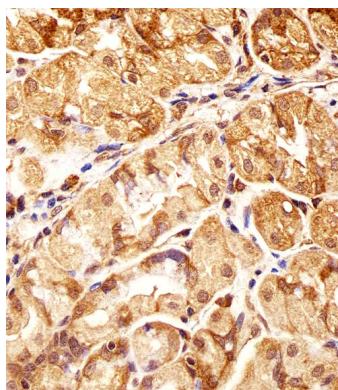
References

Ma, X.M., et al. Cell 133(2):303-313(2008)
Matsuoka, S., et al. Science 316(5828):1160-1166(2007)
Smyk, A., et al. FEBS J. 273(20):4728-4741(2006)
Andersen, J.S., et al. Nature 433(7021):77-83(2005)
Richardson, C.J., et al. Curr. Biol. 14(17):1540-1549(2004)

Images

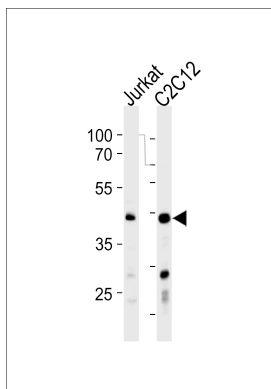


Fluorescent image of HeLa cells stained with POLDIP3 Antibody (N-term)(Cat#AP20109a). AP20109a was diluted at 1:25 dilution. An Alexa Fluor 488-conjugated goat anti-rabbit IgG at 1:400 dilution was used as the secondary antibody (green). Cytoplasmic actin was counterstained with Alexa Fluor® 555 conjugated with Phalloidin (red).



Immunohistochemical analysis of paraffin-embedded H. stomach section using POLDIP3 Antibody (N-term)(Cat#AP20109a). AP20109a was diluted at 1:25 dilution. A undiluted biotinylated goat polyvalent antibody was used as the secondary, followed by DAB staining.

POLDIP3 Antibody (N-term) (Cat. #AP20109a) western blot analysis in Jurkat, mouse C2C12 cell line lysates (35ug/lane). This demonstrates the POLDIP3 Antibody antibody detected the POLDIP3 Antibody protein (arrow).



Please note: All products are 'FOR RESEARCH USE ONLY. NOT FOR USE IN DIAGNOSTIC OR THERAPEUTIC PROCEDURES'.